

ESTHERVILLE, IOWA

AL-5342 (FAA)

VOR RWY 34

ESTHERVILLE MUNI (EST)

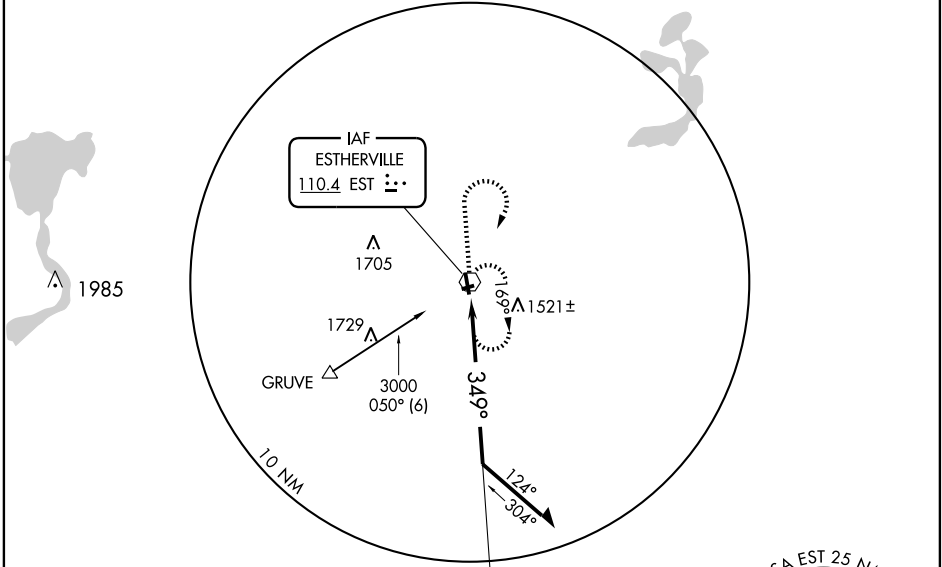
EST VOR 110.4	APP CRS 349°	Rwy Idg 4797
		TDZE 1317
		Apt Elev 1317

MISSED APPROACH: Climb to 3000 then right turn direct EST VOR and hold.

ASOS
121.425

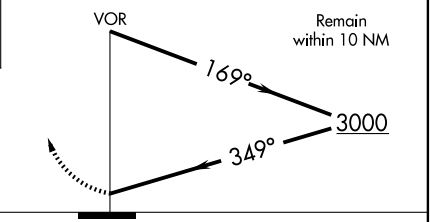
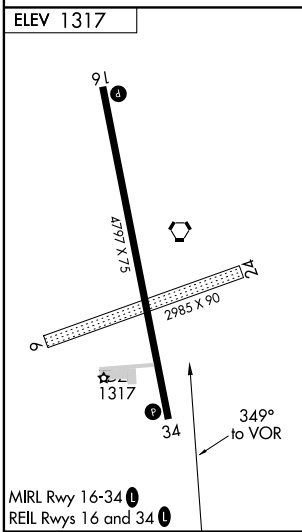
MINNEAPOLIS CENTER
127.75 257.7

UNICOM
122.8 (CTAF)



NC-3, 22 OCT 2009 to 19 NOV 2009

NC-3, 22 OCT 2009 to 19 NOV 2009



CATEGORY	A	B	C	D
S-34	1780-1	463 (500-1)		NA
CIRCLING	1780-1	463 (500-1)		NA

ESTHERVILLE, IOWA
Amdt 6B 09071

43°24'N-94°45'W

ESTHERVILLE MUNI (EST)

VOR RWY 34