

# RNAV (GPS) RWY 16

ESTHERVILLE MUNI (EST)

WAAS CH <b>40104</b> W <b>16A</b>	APP CRS <b>164°</b>	Rwy Idg <b>4797</b> TDZE <b>1319</b> Apt Elev <b>1319</b>
---	------------------------	---

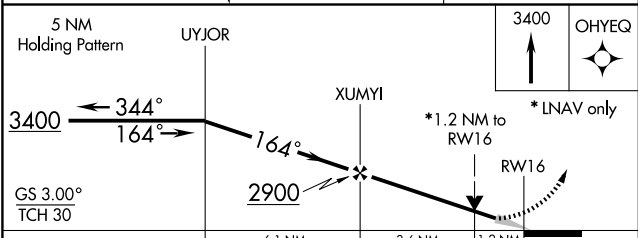
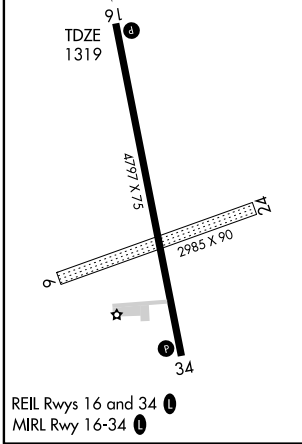
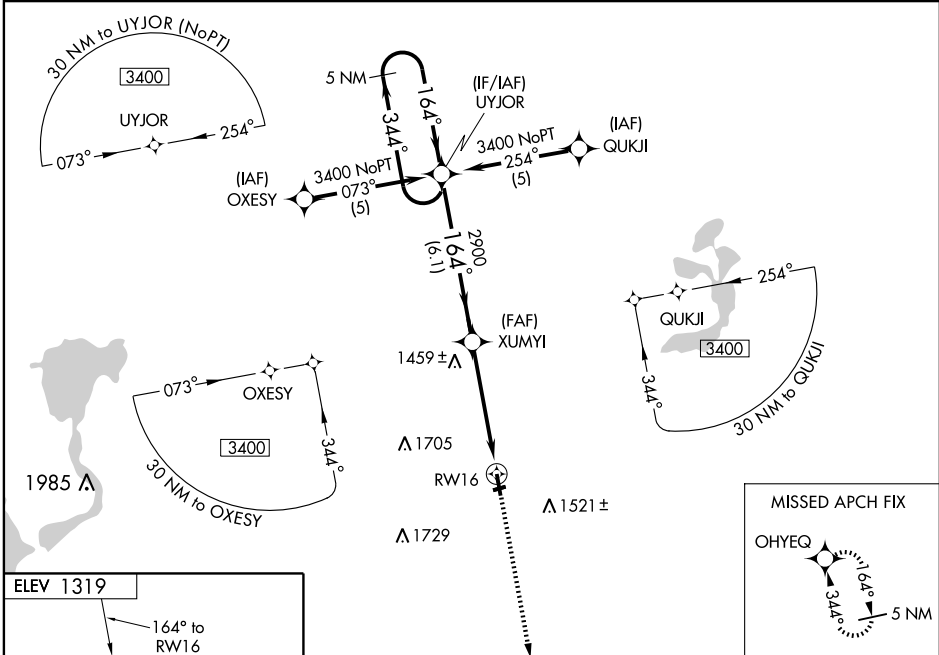
**⚠** Baro-VNAV NA when using Jackson Muni altimeter setting. If local altimeter setting not received, use Jackson Muni altimeter setting and increase all DAs/MDAs 60 feet. For uncompensated Baro-VNAV systems, LNAV/VNAV NA below -17°C (2°F) or above 54°C (130°F). DME/DME RNP-0.3 NA. VDP NA when using Jackson Muni altimeter setting.

MISSED APPROACH: Climb to 3400 direct OHYEQ and hold.

ASOS <b>121.425</b>
------------------------

MINNEAPOLIS CENTER <b>127.75 257.7</b>
---

UNICOM <b>122.8 (CTAF) 0</b>
---------------------------------



CATEGORY	A	B	C	D
LPV DA	1569-1	250 (300-1)		NA
LNAV/VNAV DA	1608-1	289 (300-1)		NA
LNAV MDA	1720-1	401 (500-1)		NA
CIRCLING	1720-1 401 (500-1)	1780-1 461 (500-1)		NA

NC-3, 22 OCT 2009 to 19 NOV 2009

NC-3, 22 OCT 2009 to 19 NOV 2009