

URBANA, ILLINOIS

AL-5341 (FAA)

VORTAC CMI 110.0 Chan 37	APP CRS 025°	Rwy ldg TDZE Apt Elev N/A N/A 735
--	------------------------	---

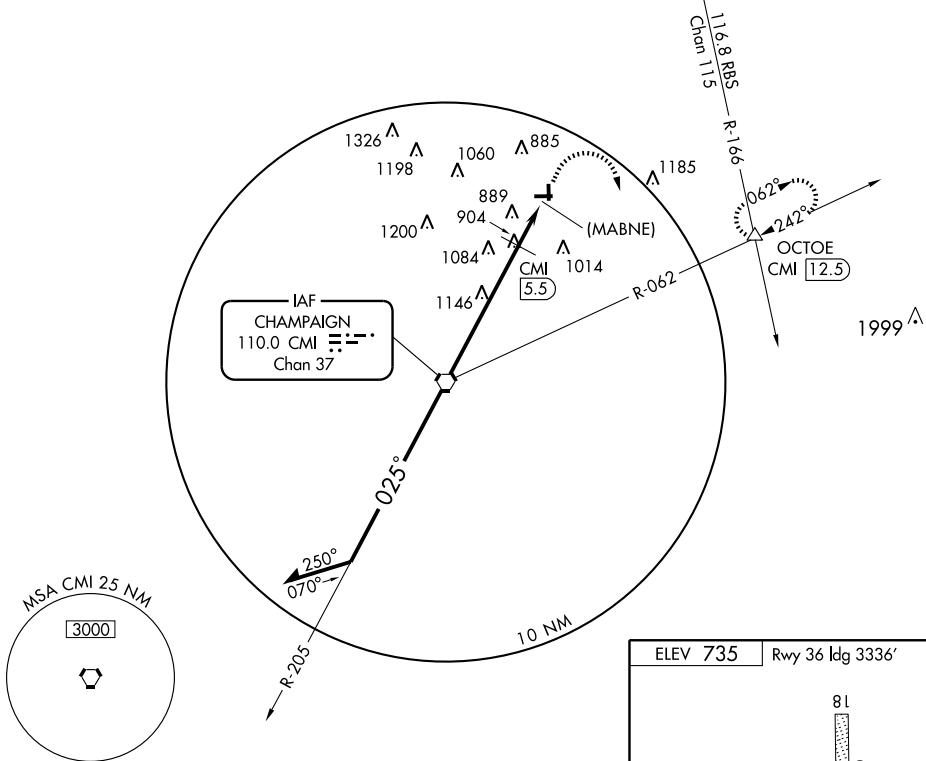
VOR or GPS-A
URBANA /FRASCA FIELD (C16)

NA Use Champaign altimeter setting; if not received, use Decatur altimeter setting and increase all MDAs 140 feet and visibilities 1/2 mile.

MISSED APPROACH: Climb to 2000 then climbing right turn to 2500 via CMI R-062 to OCTOE Int and hold.

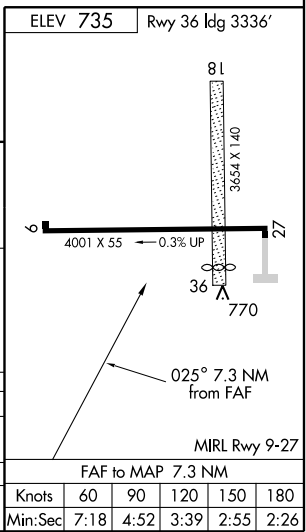
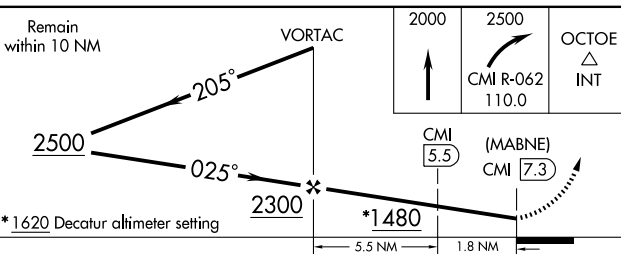
CHAMPAIGN APP CON ★
121.35 291.0

UNICOM
122.8 (CTAF)



EC-3, 22 OCT 2009 to 19 NOV 2009

EC-3, 22 OCT 2009 to 19 NOV 2009



CATEGORY	A	B	C	D
CIRCLING	1480-1 745 (800-1)	1480-1¼ 745 (800-1¼)	1480-2¼ 745 (800-2¼)	1480-2½ 745 (800-2½)
DME MINIMUMS				
CIRCLING	1260-1	525 (600-1)	1260-1½ 525 (600-1½)	1320-2 585 (600-2)

Knots	60	90	120	150	180
Min:Sec	7:18	4:52	3:39	2:55	2:26

URBANA, ILLINOIS
Amdt 11 09099

40°09'N-88°12'W

URBANA /FRASCA FIELD (C16)
VOR or GPS-A