

VOR/DME or GPS-B
URBANA /FRASCA FIELD (C16)

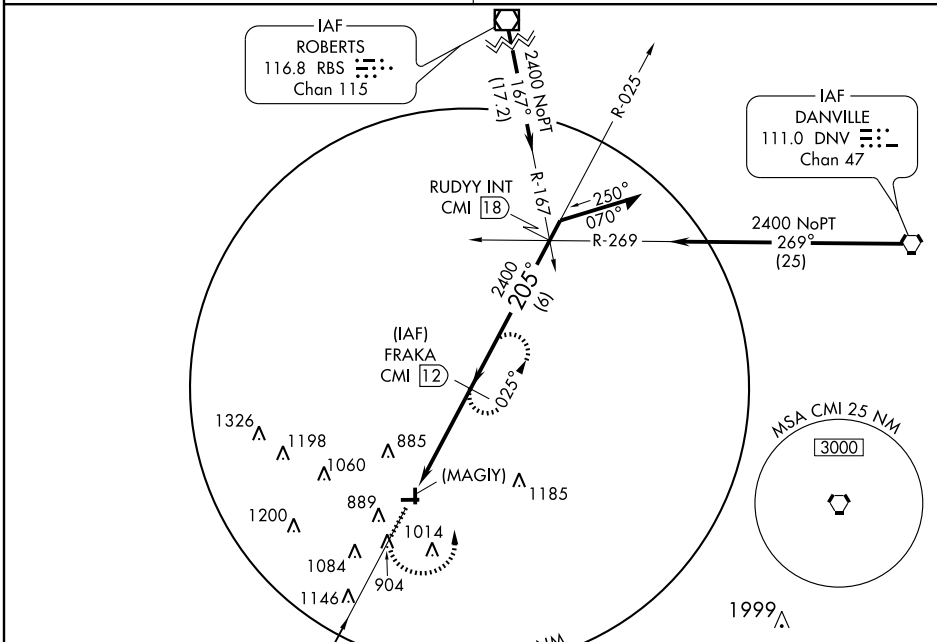
VORTAC CMI 110.0 Chan 37	APP CRS 205°	Rwy ldg TDZE Apt Elev	N/A N/A 735
--	------------------------	-----------------------------	--------------------------

NA Use Champaign altimeter setting; if not received, use Decatur altimeter setting.

MISSED APPROACH: Climb to 1800 then climbing left turn to 2400 via CMI R-025 to FRAKA 12 DME and hold.

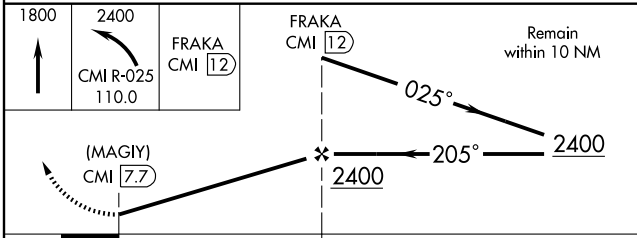
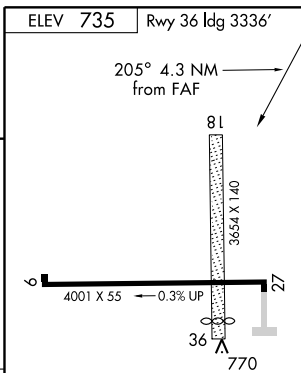
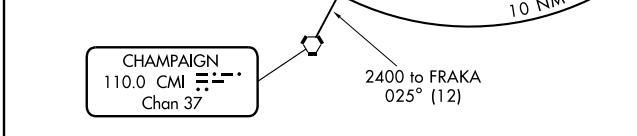
CHAMPAIGN APP CON ★
121.35 291.0

UNICOM
122.8 (CTAF)



EC-3, 22 OCT 2009 to 19 NOV 2009

EC-3, 22 OCT 2009 to 19 NOV 2009



CATEGORY	A	B	C	D
CIRCLING	1220-1	485 (500-1)	1220-1½ 485 (500-1½)	1320-2 585 (600-2)
DECATUR ALTIMETER SETTING MINIMUMS				
CIRCLING	1360-1	625 (700-1)	1360-1¾ 625 (700-1¾)	1460-2¼ 725 (800-2¼)

ELEV 735	Rwy 36 ldg 3336'				
205° 4.3 NM from FAF					
MIRL Rwy 9-27					
Knots	60	90	120	150	180
Min:Sec					