

STORM LAKE, IOWA

AL-5338 (FAA)

# RNAV (GPS) RWY 17

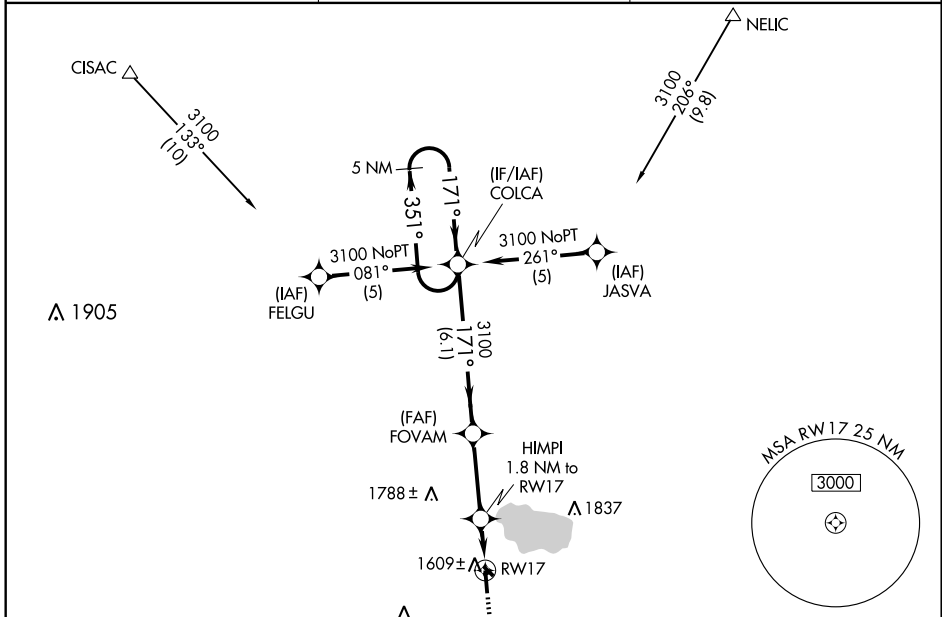
STORM LAKE MUNI (SLB)

APP CRS	Rwy Idg	<b>5000</b>
<b>171°</b>	TDZE	<b>1484</b>
	Apt Elev	<b>1488</b>

**⚠** DME/DME RNP-0.3 NA. If local altimeter setting not received; use Spencer Muni altimeter setting and increase all MDAs 100 feet. VDP NA when using Spencer Muni altimeter setting. Straight-in minimums NA at night. Circling to Rwsy 17, 6, 31, 24 and 13 NA at night.

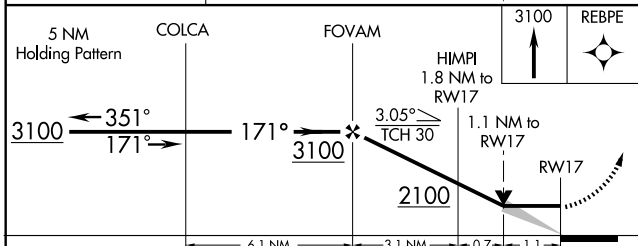
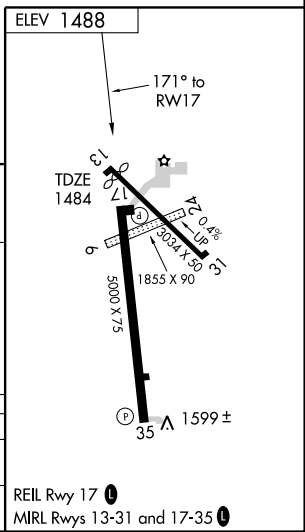
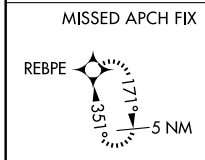
MISSED APPROACH: Climb to 3100 direct REBPE and hold.

AWOS-3 <b>118.525</b>	MINNEAPOLIS CENTER <b>134.0 288.3</b>	UNICOM <b>122.7 (CTAF) 0</b>
--------------------------	--	---------------------------------



NC-3, 22 OCT 2009 to 19 NOV 2009

NC-3, 22 OCT 2009 to 19 NOV 2009



CATEGORY	A	B	C	D
RNAV MDA	1860-1	376 (400-1)	NA	
CIRCLING	1920-1 432 (500-1)	1940-1 452 (500-1)	NA	

STORM LAKE, IOWA  
Orig 09015

42°36'N- 95°14'W

# RNAV (GPS) RWY 17

STORM LAKE MUNI (SLB)