

STORM LAKE, IOWA

AL-5338 (FAA)

**NDB RWY 35**  
STORM LAKE MUNI (SLB)

NDB SLB <b>434</b>	APP CRS <b>342°</b>	Rwy Idg TDZE Apt Elev	<b>5000</b> <b>1483</b> <b>1488</b>
-----------------------	------------------------	-----------------------------	---

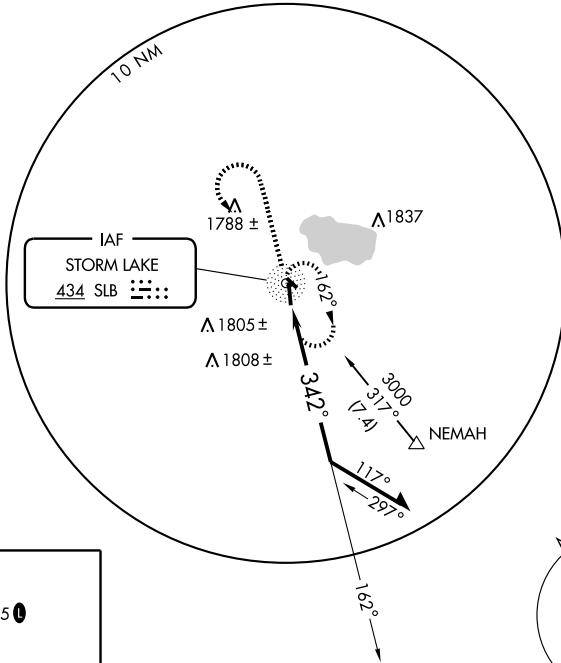
MISSED APPROACH: Climb to 3000 then left turn direct SLB NDB and hold.

AWOS-3  
**118.525**

MINNEAPOLIS CENTER  
**134.0 288.3**

UNICOM  
**122.7 (CTAF) 0**

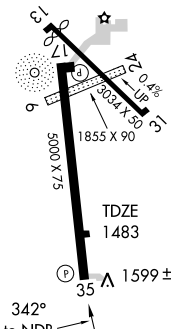
△1905



ELEV 1488

REIL Rwy 17 0

MIRL Rwy 13-31 and 17-35 0



3000



SLB



434

NDB

Remain within 10 NM

162°

3000

342°

CATEGORY	A	B	C	D
S-35	1960-1	477 (500-1)	NA	NA
CIRCLING	1960-1	472 (500-1)	NA	NA

STORM LAKE, IOWA  
Amdt 1B 09015

42°36'N - 95°14'W

STORM LAKE MUNI (SLB)  
**NDB RWY 35**

NC-3, 22 OCT 2009 to 19 NOV 2009

NC-3, 22 OCT 2009 to 19 NOV 2009