

ELYRIA, OHIO

AL-5333 (FAA)

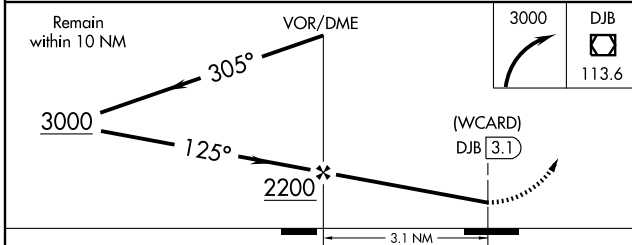
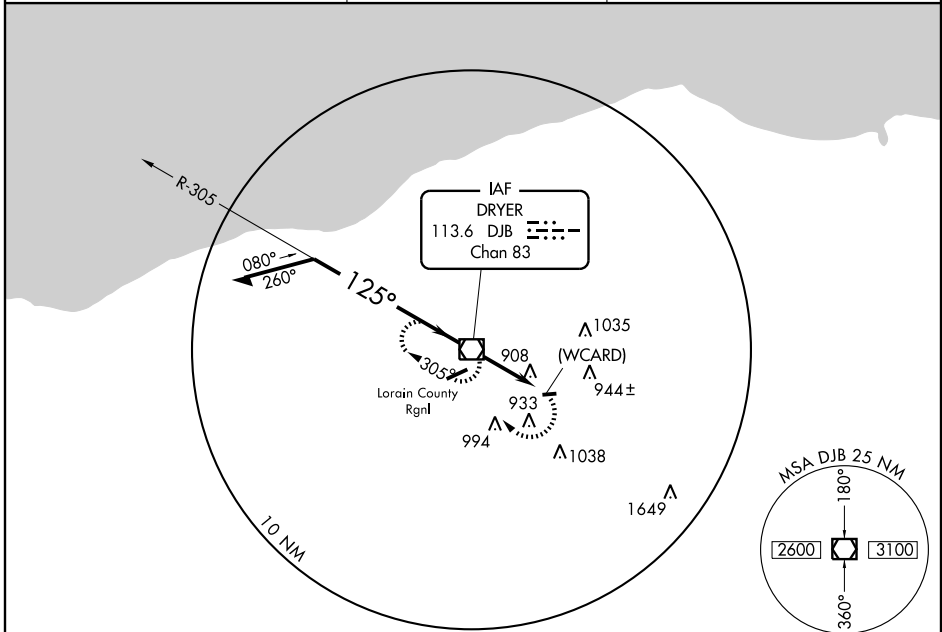
VOR/DME DJB 113.6 Chan 83	APP CRS 125°	Rwy Idg TDZE Apt Elev N/A N/A 760
---	------------------------	---

VOR or GPS-A

ELYRIA (1G1)

<p>▼ Use Cleveland Hopkins Intl altimeter setting.</p> <p>▲ NA</p>	<p>MISSED APPROACH: Climbing right turn to 3000 direct DJB VOR/DME and hold.</p>
--	--

<p>CLEVELAND APP CON 126.35 354.025</p>	<p>CLNC DEL 125.7</p>	<p>UNICOM 122.8 (CTAF)</p>
--	----------------------------------	---------------------------------------



CATEGORY	A	B	C	D	FAF to MAP 3.1 NM					
	1220-1 460 (500-1)		1260-1½ 500 (500-1½)	NA	Knots	60	90	120	150	180
CIRCLING	1220-1 460 (500-1)		1260-1½ 500 (500-1½)	NA	Min:Sec	3:06	2:04	1:33	1:14	1:02

ELYRIA, OHIO
Amdt 7A 09183

41°20'N - 82°06'W

VOR or GPS-A

EC-2, 22 OCT 2009 to 19 NOV 2009

EC-2, 22 OCT 2009 to 19 NOV 2009