

# RNAV (GPS) RWY 30

CHARLES CITY/ NORTHEAST IOWA RGNL (CCY)

APP CRS	Rwy Idg	<b>4001</b>
<b>302°</b>	TDZE	<b>1120</b>
	Apt Elev	<b>1125</b>

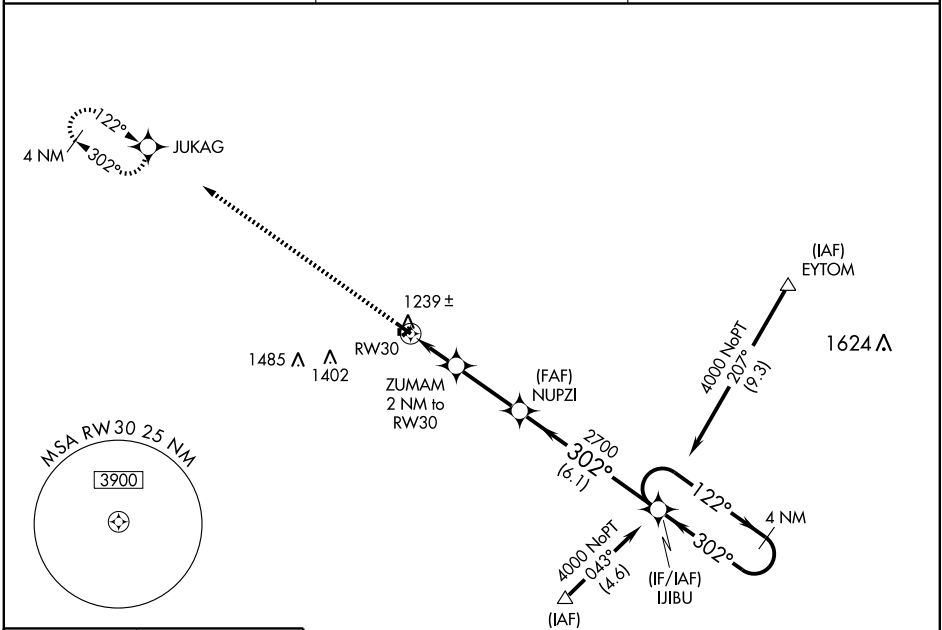
**▽** DME/DME RNP-0.3 NA  
**▲** When local altimeter setting not received, use Waterloo altimeter setting and increase all MDA 120 feet.  
 VDP NA when using Waterloo altimeter setting.

**MISSED APPROACH:** Climb to 4000 direct JUKAG and hold, continue climb-in-hold to 4000.

AWOS-3	<b>125.525</b>
--------	----------------

WATERLOO APP CON ★	<b>118.9 251.15</b>
--------------------	---------------------

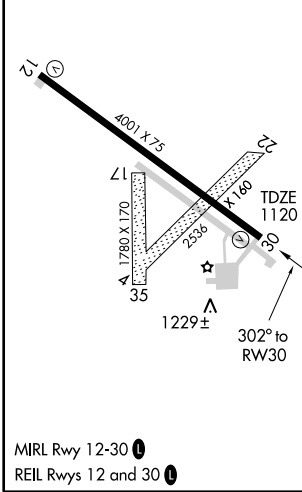
UNICOM	<b>122.8 (CTAF)</b>
--------	---------------------



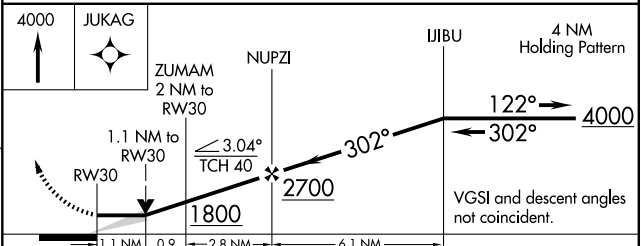
NC-3, 22 OCT 2009 to 19 NOV 2009

NC-3, 22 OCT 2009 to 19 NOV 2009

ELEV 1125



Procedure NA for arrivals at EYTOM via V503 northwest bound, and arrivals at VIKCU via V158 westbound.



CATEGORY	A	B	C	D
LNAV MDA	1500-1	380 (400-1)	NA	
CIRCLING	1560-1 435 (500-1)	1580-1 455 (500-1)	NA	