

CHARLES CITY, IOWA

AL-5329 (FAA)

RNAV (GPS) RWY 12

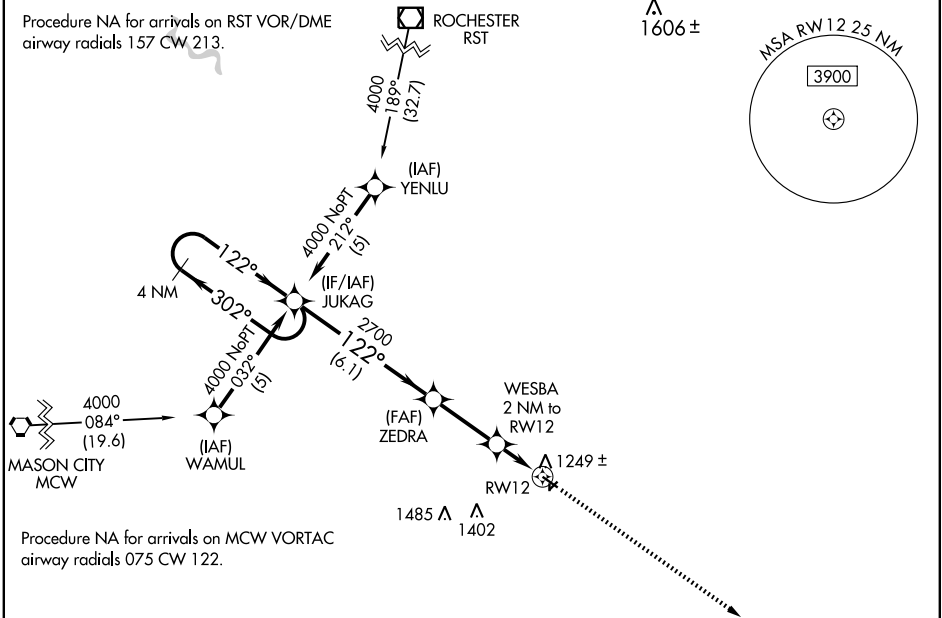
CHARLES CITY/NORTHEAST IOWA RGNL (CCY)

APP CRS	Rwy Idg	4001
122°	TDZE	1120
	Apt Elev	1125

▼ DME/DME RNP-0.3 NA.
▲ When local altimeter setting not received, use Waterloo altimeter setting and increase all MDA 120 feet.
 VDP NA when using Waterloo altimeter setting.

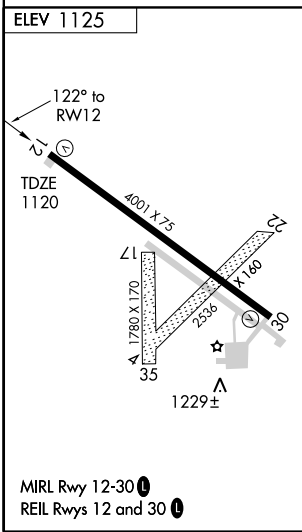
MISSED APPROACH: Climb to 4000 direct IJIBU and hold, continue climb-in-hold to 4000.

AWOS-3 125.525	WATERLOO APP CON ★ 118.9 251.15	UNICOM 122.8 (CTAF) Ⓛ
--------------------------	---	--



NC-3, 22 OCT 2009 to 19 NOV 2009

NC-3, 22 OCT 2009 to 19 NOV 2009



	4 NM Holding Pattern	JUKAG	ZEDRA	WESBA 2 NM to RW12	4000	IJIBU
	4000	302°	122°	122°	2700	3.04° TCH 40
				1800	1.1 NM to RW12	
					0.9	1.1 NM
CATEGORY	A	B	C	D		
LNAV MDA	1500-1	380 (400-1)		NA		
CIRCLING	1560-1	1580-1		NA		
	435 (500-1)	455 (500-1)				

CHARLES CITY, IOWA
 Orig 09015

CHARLES CITY/NORTHEAST IOWA RGNL (CCY)
 43°04'N-92°37'W
RNAV (GPS) RWY 12