

CHARLES CITY, IOWA

AL-5329 (FAA)

# LOC RWY 12

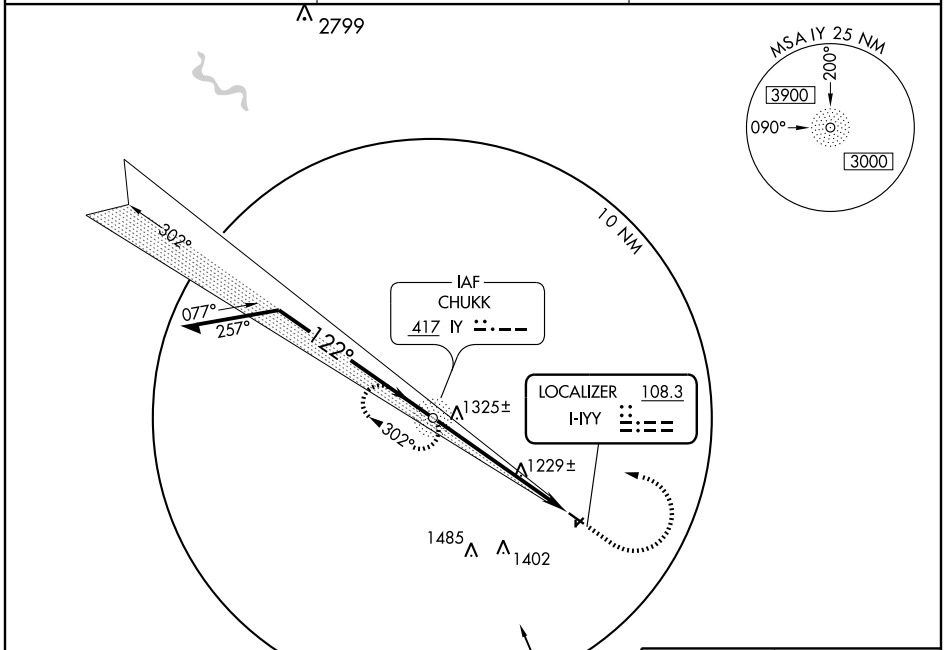
CHARLES CITY/ NORTHEAST IOWA RGNL (CCY)

LOC I-YYY <b>108.3</b>	APP CRS <b>122°</b>	Rwy Idg <b>4001</b>
		TDZE <b>1120</b>
		Apt Elev <b>1125</b>

**⚠** ADF required.  
**⚠** When local altimeter setting not received, use Waterloo altimeter setting and increase all MDA 120 feet.
 

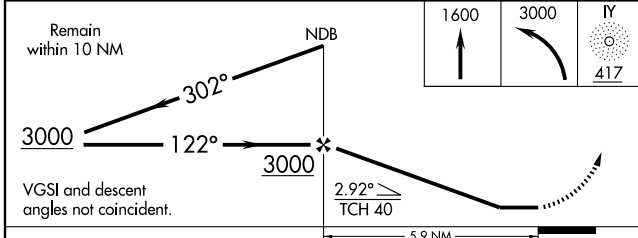
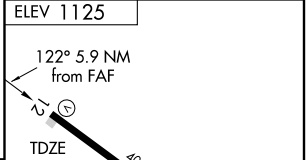
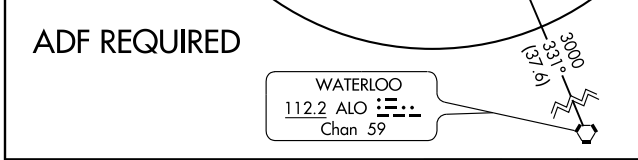
**MISSED APPROACH:** Climb to 1600 then climbing left turn to 3000 direct IY NDB and hold.

<b>AWOS-3</b> <b>125.525</b>	<b>WATERLOO APP CON *</b> <b>118.9 251.15</b>	<b>UNICOM</b> <b>122.8 (CTAF) <b>L</b></b>
---------------------------------	--	---



NC-3, 22 OCT 2009 to 19 NOV 2009

NC-3, 22 OCT 2009 to 19 NOV 2009



CATEGORY	A	B	C	D
S-12	1480-1	360 (400-1)		NA
CIRCLING	1560-1 435 (500-1)	1580-1 455 (500-1)		NA

MIRL Rwy 12-30 **L**  
REIL Rwys 12 and 30 **L**

FAF to MAP 5.9 NM					
Knots	60	90	120	150	180
Min:Sec	5:54	3:56	2:57	2:22	1:58

CHARLES CITY, IOWA  
Orig-F 09127

CHARLES CITY/ NORTHEAST IOWA RGNL (CCY)  
43°04'N-92°37'W

# LOC RWY 12