

OXFORD, MISSISSIPPI

AL-5327 (FAA)

VORTAC HLI 112.4 Chan 71	APP CRS 182°	Rwy Idg TDZE Apt Elev	N/A N/A 452
--	------------------------	-----------------------------	--

VOR/DME or GPS-A
OXFORD/ UNIVERSITY-OXFORD (UOX)

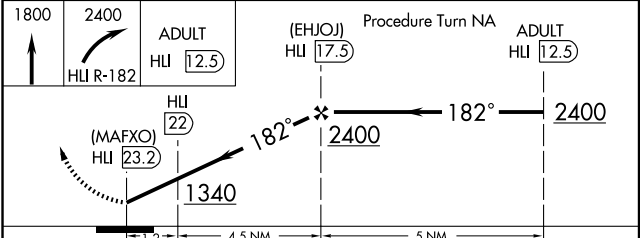
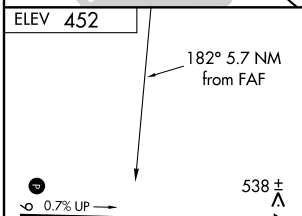
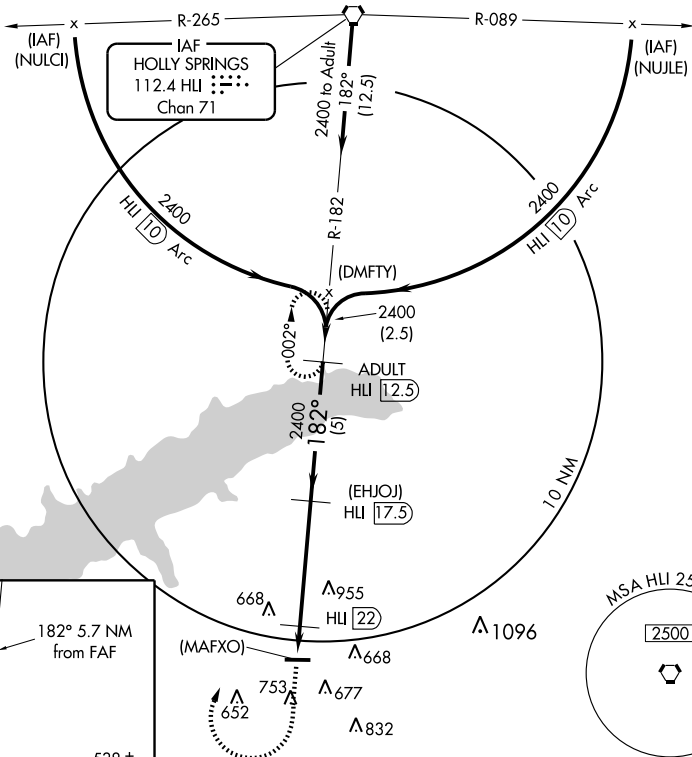
▼
▲ NA

MISSED APPROACH: Climb to 1800 then climbing right turn to 2400 via HLI R-182 to ADULT 12.5 DME and hold.

AWOS-3 132.725	MEMPHIS CENTER 128.5 381.4	UNICOM 123.0 (CTAF) 0
--------------------------	--------------------------------------	---------------------------------

SC-4, 22 OCT 2009 to 19 NOV 2009

SC-4, 22 OCT 2009 to 19 NOV 2009



ELEV 452

182° 5.7 NM from FAF

538 ±

0.7% UP

5600 X 100

1781

MIRL Rwy 9-27 0

REIL Rwy 27

CATEGORY	A	B	C	D
CIRCLING	1240-1 788 (800-1)	1240-1¼ 788 (800-1¼)	1240-2¼ 788 (800-2¼)	1240-2½ 788 (800-2½)

OXFORD, MISSISSIPPI
Amdt 4B 08325

34°23'N-89°32'W

OXFORD/ UNIVERSITY-OXFORD (UOX)
VOR/DME or GPS-A