

RNAV (GPS) RWY 9

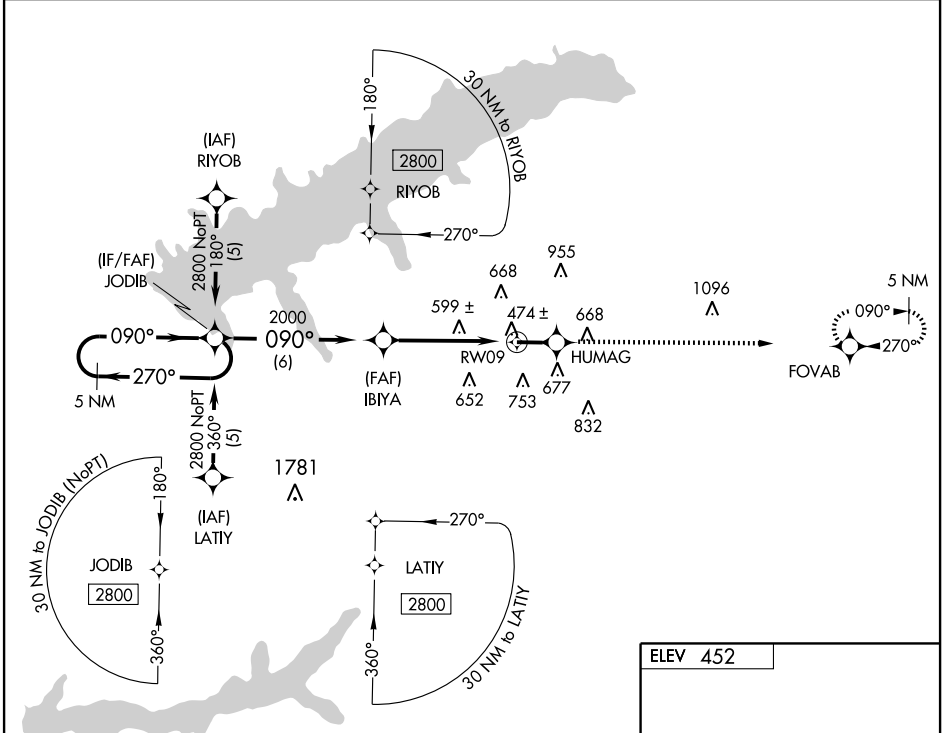
OXFORD/ UNIVERSITY-OXFORD (UOX)

WAAS CH 77800 W09A	APP CRS 090°	Rwy Idg TDZE 418 Apt Elev 452	5600
--	------------------------	---	-------------

▼ For uncompensated BARO-VNAV systems, LNAV/VNAV NA below -15°C (5°F) or above 48°C (118°F). DME/DME RNP-0.3 NA. If local altimeter setting not received, use Olive Branch altimeter setting and increase all DAs/MDAs 100 feet. Visibility reduction by helicopters NA.

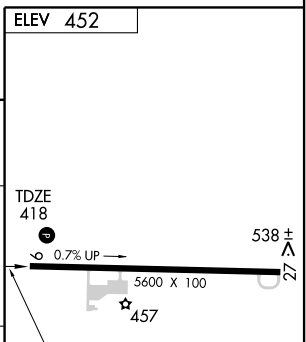
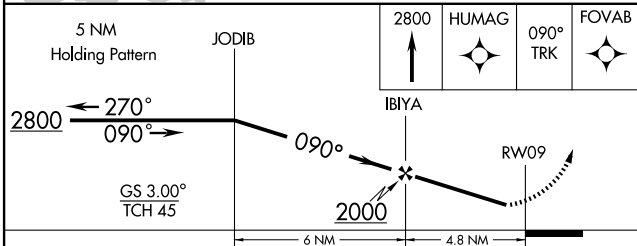
MISSED APPROACH: Climb to 2800 direct HUMAG and via 090° track to FOVAB and hold, continue climb-in-hold to 2800.

AWOS-3 132.725	MEMPHIS CENTER 128.5 381.4	UNICOM 123.0 (CTAF) 0
--------------------------	--------------------------------------	---------------------------------



SC-4, 22 OCT 2009 to 19 NOV 2009

SC-4, 22 OCT 2009 to 19 NOV 2009



CATEGORY	A	B	C	D
LPV DA		668-1	250 (300-1)	
LNAV/VNAV DA		876-1¾	458 (500-1¾)	
LNAV MDA	920-1	502 (500-1)	920-1½	502 (500-1½)
CIRCLING	980-1	528 (600-1)	1060-1¾ 608 (700-1¾)	1060-2 608 (700-2)