

RNAV (GPS) RWY 27

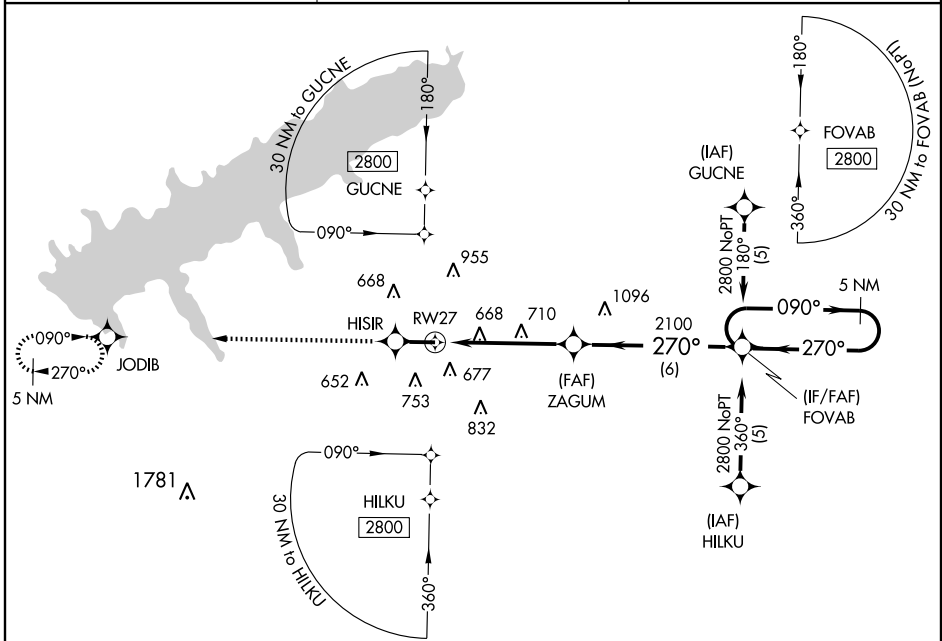
OXFORD/ UNIVERSITY-OXFORD (UOX)

APP CRS 270°	Rwy Idg 5600
	TDZE 452
	Apt Elev 452

▽ DME/DME RNP-0.3 NA. Visibility reduction by helicopters NA.
▲ NA If local altimeter setting not received, use Olive Branch altimeter setting and increase all MDAs 100 feet.

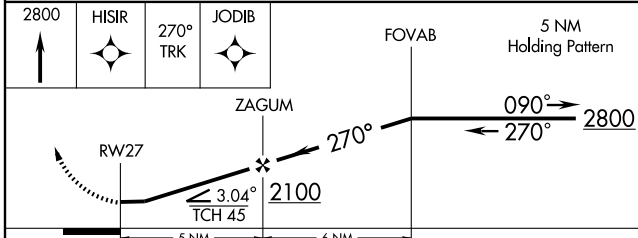
MISSED APPROACH: Climb to 2800 direct HISIR and via 270° track to JODIB and hold.

AWOS-3 132.725	MEMPHIS CENTER 128.5 381.4	UNICOM 123.0 (CTAF) 0
--------------------------	--------------------------------------	---------------------------------



SC-4, 22 OCT 2009 to 19 NOV 2009

SC-4, 22 OCT 2009 to 19 NOV 2009



CATEGORY	A	B	C	D
LNVA MDA	960-1 508 (600-1)		960-1½ 508 (600-1½)	
CIRCLING	980-1 528 (600-1)		1060-1¾ 608 (700-1¾)	1060-2 608 (700-2)