

OXFORD, MISSISSIPPI

AL-5327 (FAA)

# LOC RWY 9

OXFORD/ UNIVERSITY-OXFORD (UOX)

LOC I-UV D <b>111.7</b>	APP CRS <b>090°</b>	Rwy Idg TDZE Apt Elev	<b>5600</b> <b>418</b> <b>452</b>
----------------------------	------------------------	-----------------------------	---

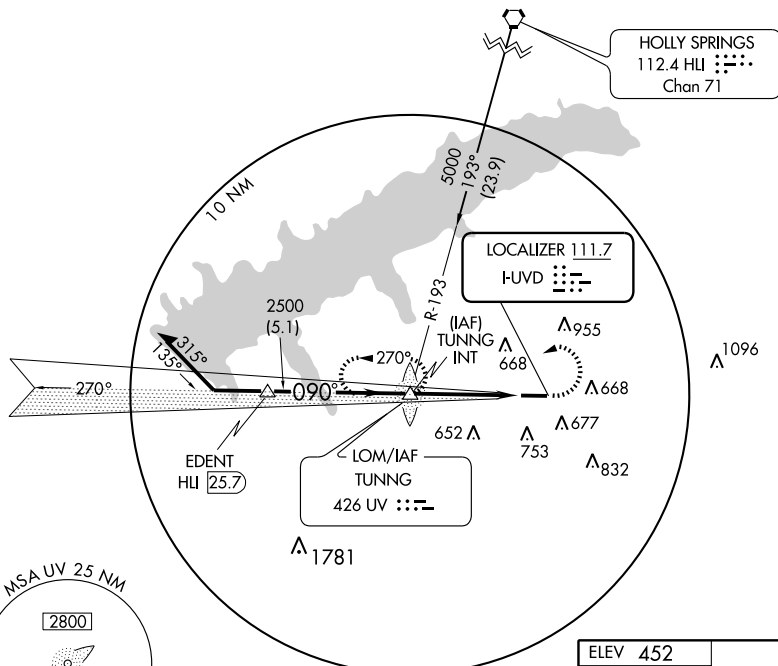
▼ Visibility reduction by helicopters NA.  
▲ NA

MISSED APPROACH: Climb to 1100 then climbing left turn to 2500 direct TUNNG LOM/Int and hold.

AWOS-3  
**132.725**

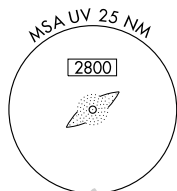
MEMPHIS CENTER  
**128.5 381.4**

UNICOM  
**123.0 (CTAF) 0**

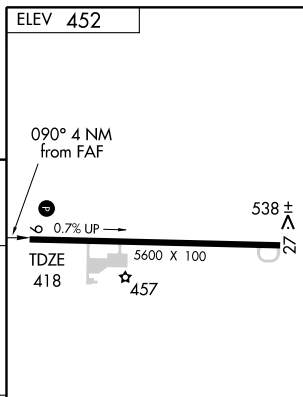
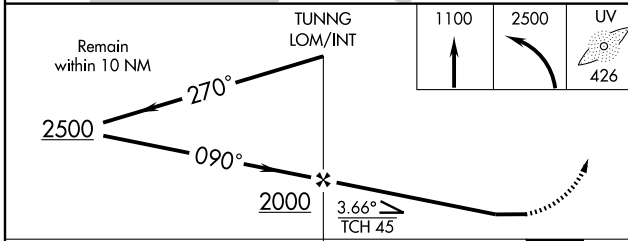


SC-4, 22 OCT 2009 to 19 NOV 2009

SC-4, 22 OCT 2009 to 19 NOV 2009



## ADF REQUIRED



CATEGORY	A	B	C	D
S-9	840-1	422 (400-1)	840-1¼	422 (400-1¼)
CIRCLING	980-1	528 (600-1)	1060-1¾	1060-2 608 (700-2)

MIRL Rwy 9-27 0  
REIL Rwy 27

FAF to MAP 4 NM

Knots	60	90	120	150	180
Min:Sec	4:00	2:40	2:00	1:36	1:20

OXFORD, MISSISSIPPI  
Amdt 2B 08325

34°23'N-89°32'W

OXFORD/ UNIVERSITY-OXFORD (UOX)

# LOC RWY 9