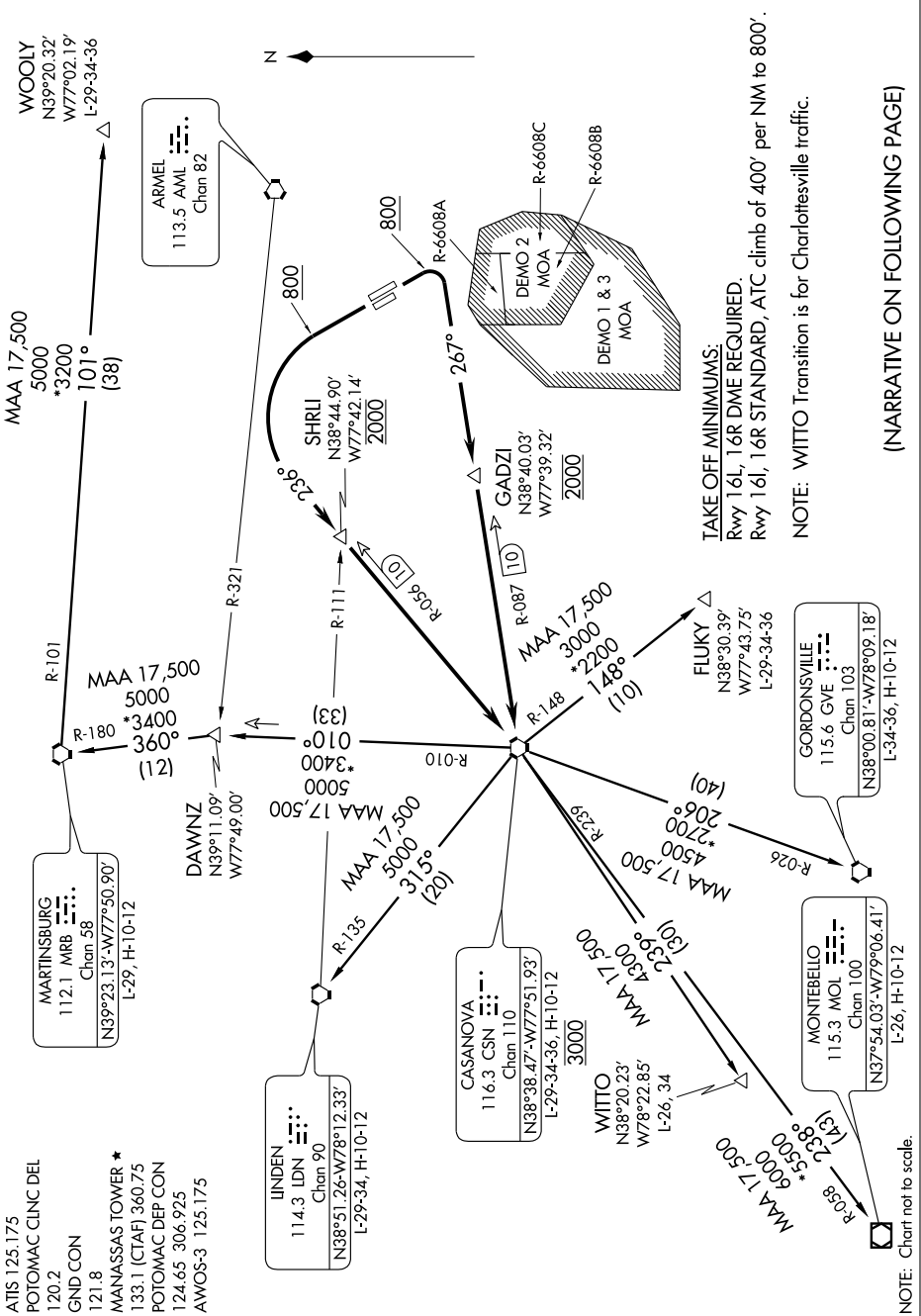


NE-3, 22 OCT 2009 to 19 NOV 2009



TAKE OFF MINIMUMS:
 Rwy 16L, 16R DME REQUIRED.
 Rwy 16L, 16R STANDARD, ATC climb of 400' per NM to 800'.

NOTE: WITTO Transition is for Charlottesville traffic.

(NARRATIVE ON FOLLOWING PAGE)

- ATIS 125.175
- POTOMAC CLNC DEL 120.2
- GND CON 121.8
- MANASSAS TOWER * 133.1 (CTAF) 360.75
- POTOMAC DEP CON 124.65 306.925
- AWOS-3 125.175

NE-3, 22 OCT 2009 to 19 NOV 2009

NOTE: Chart not to scale.