

SHENANDOAH, IOWA

AL-5325 (FAA)

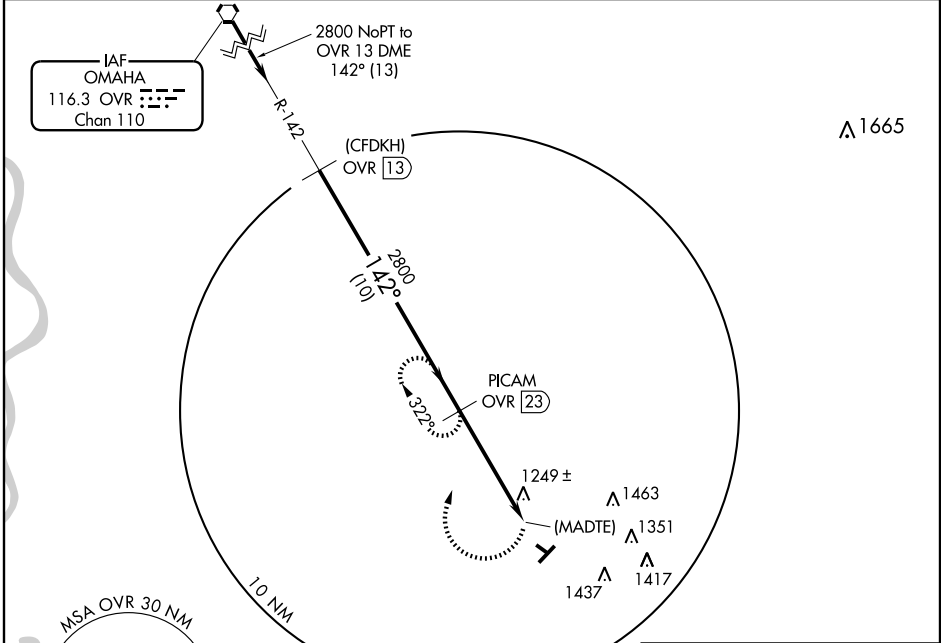
VOR/DME or GPS RWY 12

SHENANDOAH MUNI (SDA)

VORTAC OVR 116.3 Chan 110	APP CRS 142°	Rwy Idg TDZE Apt Elev	3300 967 970
---	------------------------	-----------------------------	---

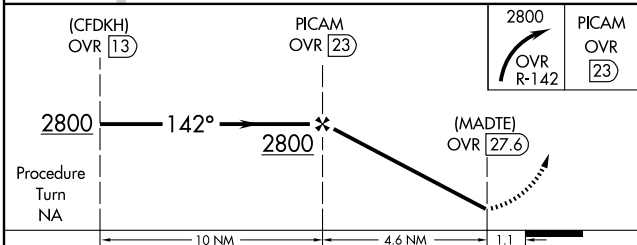
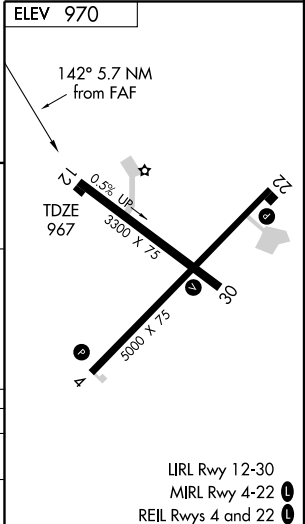
MISSED APPROACH: Climbing right turn to 2800 via OVR R-142 to PICAM/OVR 23 DME and hold.

AWOS-3 125.525	OMAHA APP CON 124.5 263.0	UNICOM 122.8 (CTAF) 0
--------------------------	-------------------------------------	--



NC-3, 22 OCT 2009 to 19 NOV 2009

NC-3, 22 OCT 2009 to 19 NOV 2009



CATEGORY	A	B	C	D
S-12	1540-1¼	573 (600-1¼)		NA
CIRCLING	1540-1¼	570 (600-1¼)		NA

SHENANDOAH, IOWA
Amdt 3A 09127

40°45'N-95°25'W

VOR/DME or GPS RWY 12

SHENANDOAH MUNI (SDA)

LIRL Rwy 12-30
MIRL Rwy 4-22
REIL Rwys 4 and 22