

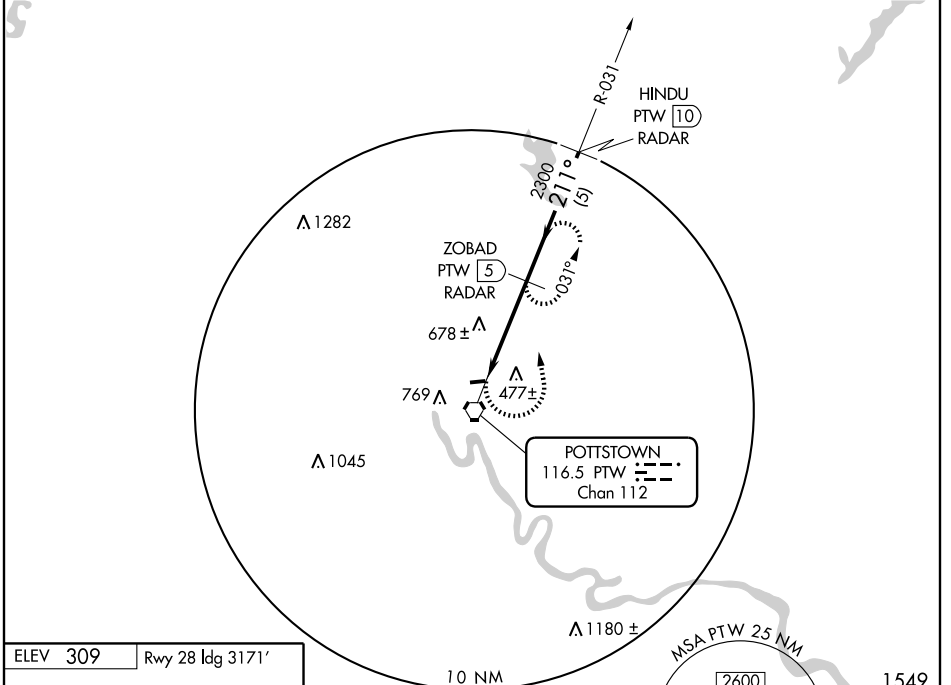
POTTSTOWN, PENNSYLVANIA

AL-5323 (FAA)

VORTAC PTW 116.5 Chan 112	APP CRS 211°	Rwy ldg TDZE Apt Elev	N/A N/A 309
---	------------------------	-----------------------------	--

VOR/DME-A
POTTSTOWN-LIMERICK (PTW)

Circling NA south of Rwy 10-28.		MISSED APPROACH: Climbing left turn to 2300 via PTW R-031 to ZOBAD 5 DME/RADAR and hold.	
ASOS 119.425	PHILADELPHIA APP CON 126.85 263.125	CLNC DEL 118.55	UNICOM 122.7 (CTAF)

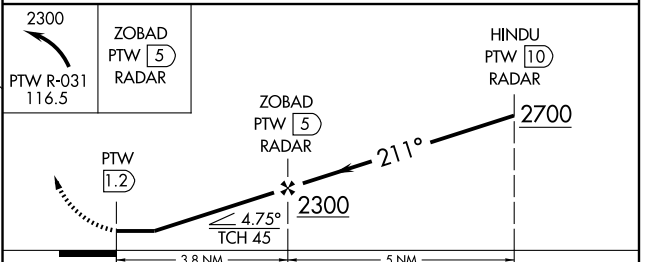
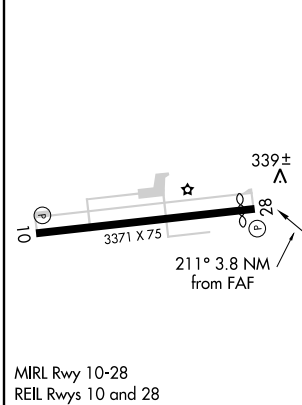


NE-4, 22 OCT 2009 to 19 NOV 2009

NE-4, 22 OCT 2009 to 19 NOV 2009

ELEV 309	Rwy 28 ldg 3171'
----------	------------------

RADAR REQUIRED



MIRL Rwy 10-28
REIL Rwys 10 and 28

CATEGORY	A	B	C	D
CIRCLING	940-1	631 (700-1)	940-1¾ 631 (700-1¾)	NA

POTTSTOWN, PENNSYLVANIA
Amdt 3A 08157

40°14'N - 75°33'W

POTTSTOWN-LIMERICK (PTW)
VOR/DME-A