

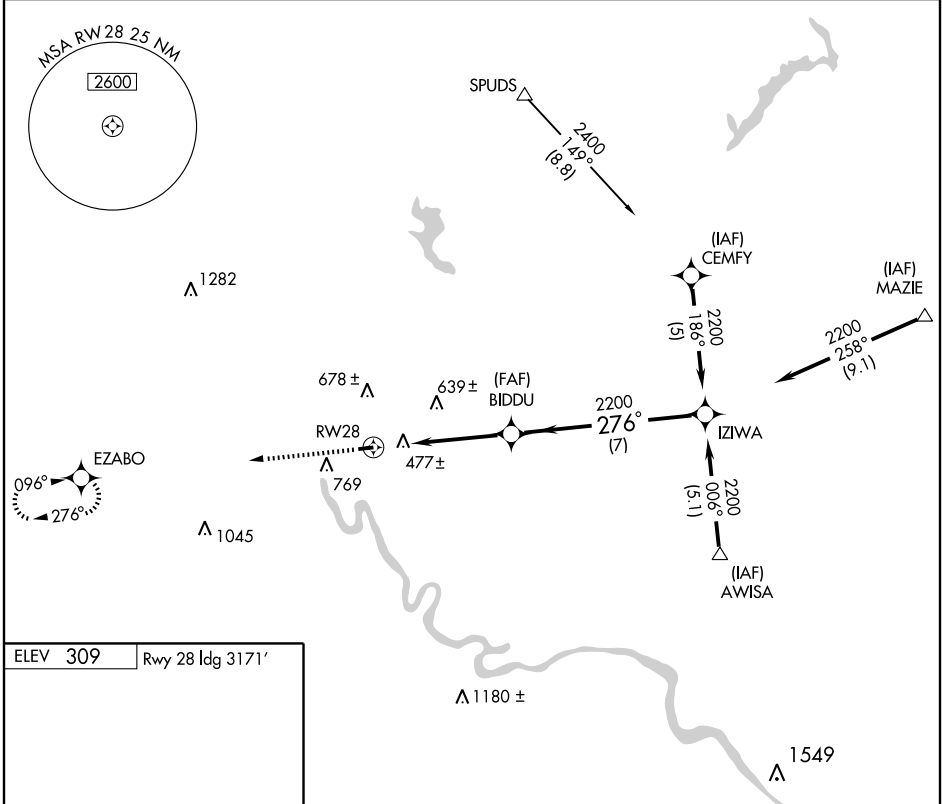
GPS RWY 28

POTTSTOWN-LIMERICK (PTW)

APP CRS	Rwy Idg	3171
276°	TDZE	309
	Apt Elev	309

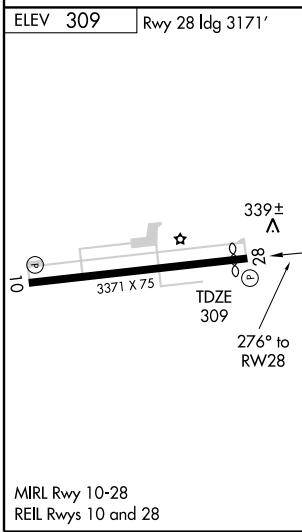
<p>▼ Circling NA south of Rwy 10-28.</p> <p>▲ NA</p>	<p>MISSED APPROACH: Climb to 2400 direct EZABO WP and hold.</p>
--	---

ASOS 119.425	PHILADELPHIA APP CON 126.85 263.125	CLNC DEL 118.55	UNICOM 122.7 (CTAF)
------------------------	---	---------------------------	-------------------------------



NE-4, 22 OCT 2009 to 19 NOV 2009

NE-4, 22 OCT 2009 to 19 NOV 2009



2400	EZABO	VGSI and descent angles not coincident.			
		BIDDU	IZIWA		
		276°	2200	Procedure Turn NA	
		≤ 3.48°			
		TCH 45			
		5 NM	7 NM		
CATEGORY	A	B	C	D	
S-28	820-1	511 (600-1)	820-1½ 511 (600-1½)	NA	
CIRCLING	860-1	551 (600-1)	860-1½ 551 (600-1½)	NA	