

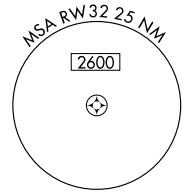
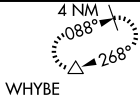
RNAV (GPS) RWY 32

MANSFIELD MUNI (1B9)

APP CRS 319°	Rwy Idg 3264
	TDZE 122
	Apt Elev 122

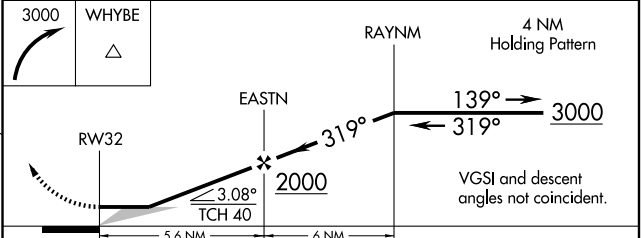
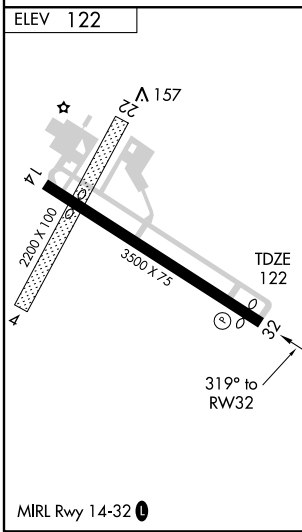
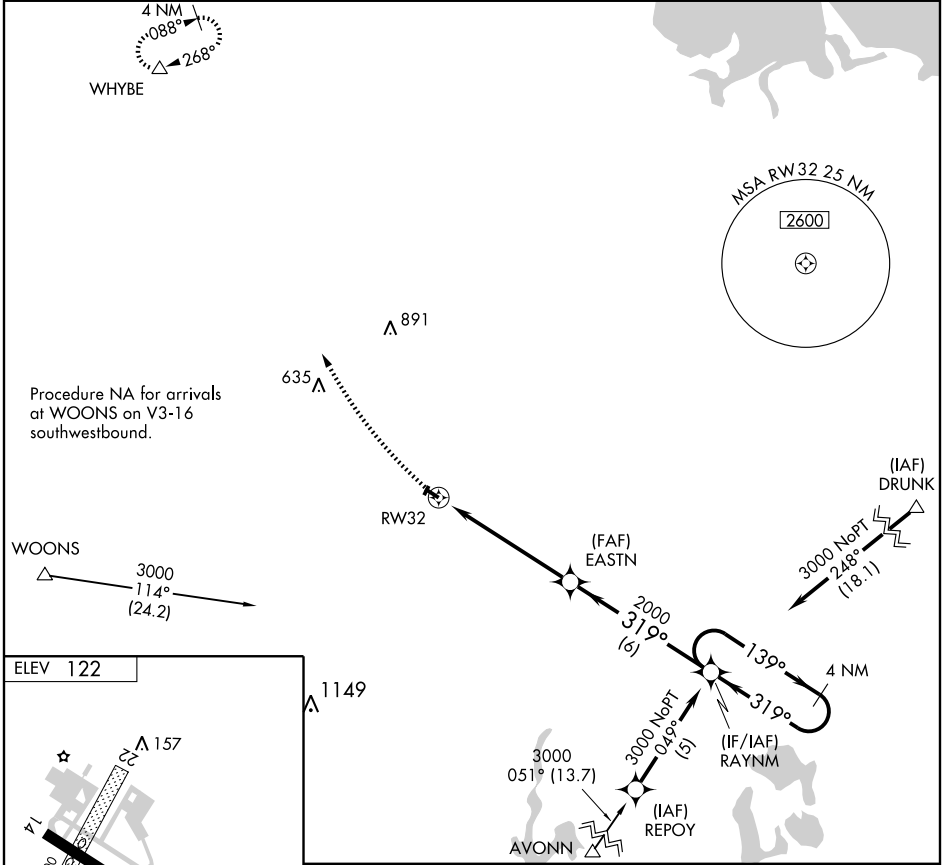
<p>▽ GPS or RNP-0.3 required. DME/DME RNP-0.3 NA. △ NA Use Taunton Muni - King Field altimeter setting. Circling NA to Rwy's 4 and 22.</p>	<p>MISSED APPROACH: Climbing right turn to 3000 direct WHYBE WP and hold.</p>
--	---

<p>BOSTON APP CON 124.1 382.0</p>	<p>UNICOM 123.0 (CTAF) 0</p>
---	--



NE-1, 22 OCT 2009 to 19 NOV 2009

NE-1, 22 OCT 2009 to 19 NOV 2009



CATEGORY	A	B	C	D
LNAV MDA	600-1	478 (500-1)		NA
CIRCLING	640-1	518 (600-1)		NA