

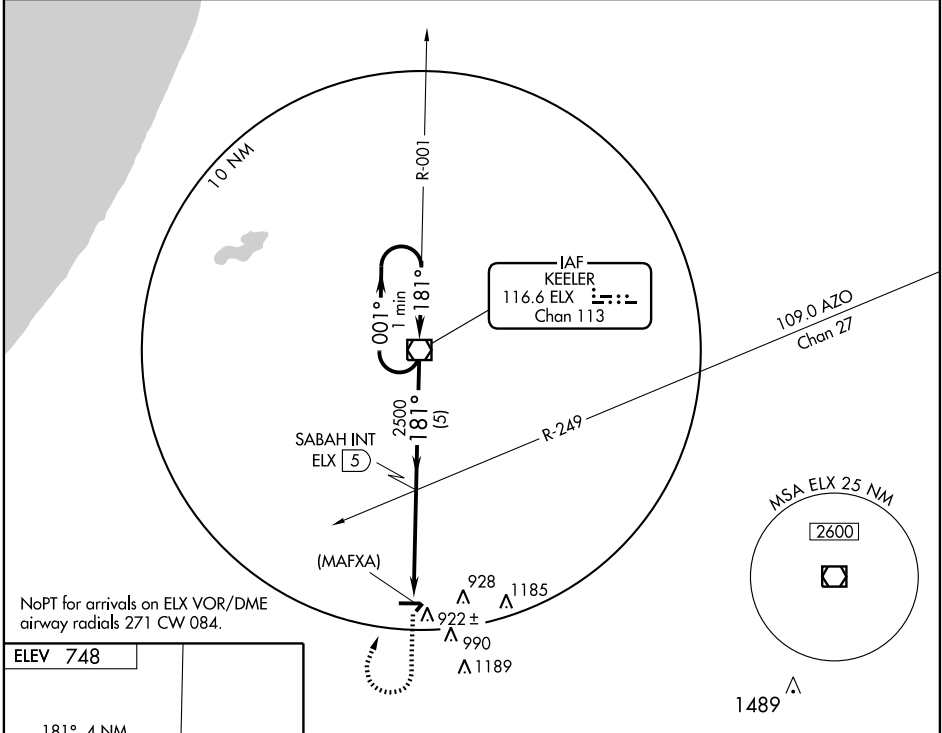
DOWAGIAC, MICHIGAN

AL-5321 (FAA)

VOR/DME ELX <b>116.6</b> Chan <b>113</b>	APP CRS <b>181°</b>	Rwy Idg TDZE Apt Elev <b>748</b>	<b>N/A</b> <b>N/A</b> <b>748</b>
------------------------------------------------	------------------------	----------------------------------------	----------------------------------------

**VOR or GPS-A**  
DOWAGIAC MUNI (C91)

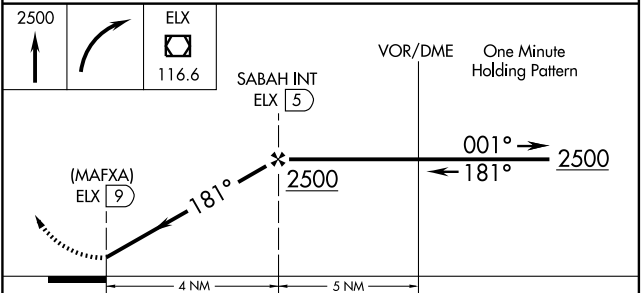
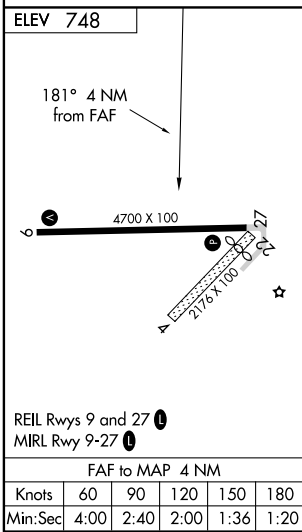
<p>▼ Obtain local altimeter setting on CTAF; when not received, use South Bend, Indiana altimeter setting.</p> <p>▲ NA</p>	<p>MISSED APPROACH: Climb to 2500 then right turn direct ELX VOR/DME and hold.</p>
<p>SOUTH BEND APP CON * <b>118.55 257.8</b></p>	<p>UNICOM <b>122.8</b> (CTAF) <b>0</b></p>



NoPT for arrivals on ELX VOR/DME airway radials 271 CW 084.

EC-1, 22 OCT 2009 to 19 NOV 2009

EC-1, 22 OCT 2009 to 19 NOV 2009



CATEGORY	A	B	C	D
CIRCLING	1300-1	552 (600-1)	1340-1½ 592 (600-1½)	1340-2 592 (600-2)
SOUTH BEND INDIANA ALTIMETER SETTING MINIMUMS				
CIRCLING	1360-1	612 (700-1)	1400-1¾ 652 (700-1¾)	1400-2 652 (700-2)

DOWAGIAC, MICHIGAN  
Amdt 9 09295

42°00'N - 86°08'W

DOWAGIAC MUNI (C91)  
**VOR or GPS-A**