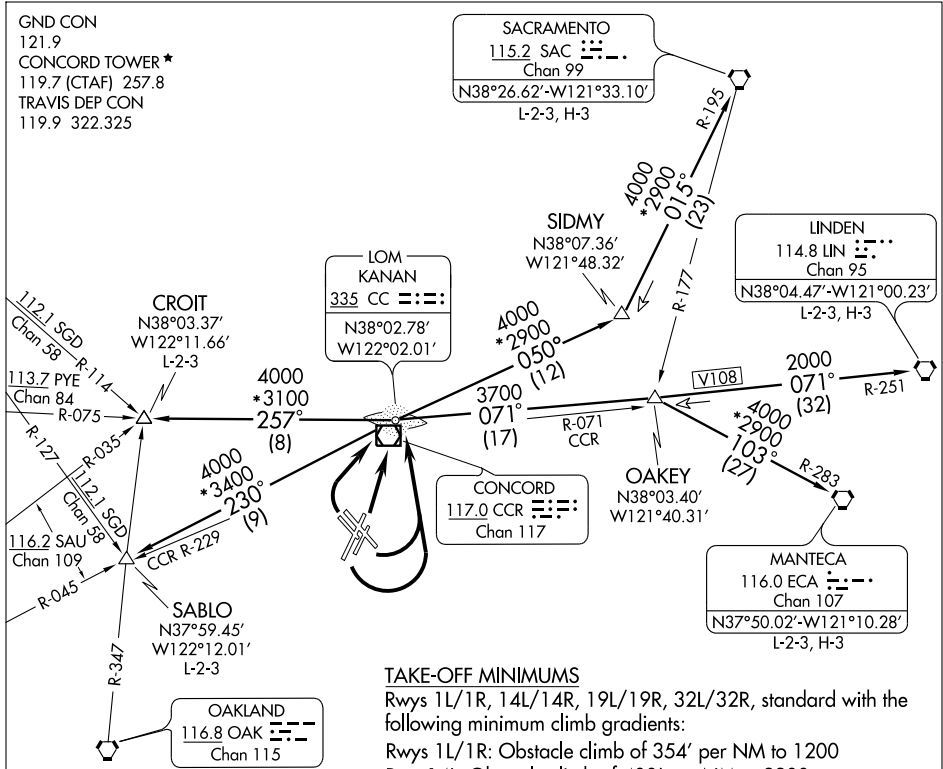


KANAN TWO DEPARTURE

CONCORD/ BUCHANAN FIELD (CCR)
CONCORD, CALIFORNIA

SL-5320 (FAA)



SW-2, 22 OCT 2009 to 19 NOV 2009

SW-2, 22 OCT 2009 to 19 NOV 2009

TAKE-OFF MINIMUMS

Rwys 1L/1R, 14L/14R, 19L/19R, 32L/32R, standard with the following minimum climb gradients:
 Rwy 1L/1R: Obstacle climb of 354' per NM to 1200
 Rwy 14L: Obstacle climb of 400' per NM to 2200.
 Rwy 14R: Obstacle climb of 380' per NM to 2200.
 Rwys 19L/19R: Obstacle climb of 470' per NM to 3700.
 Rwys 32L/32R: Obstacle climb of 360' per NM to 1200.

TAKE-OFF OBSTACLE NOTES

Rwy 1L: Fence 117' from DER, on centerline, 12' AGL/29' MSL.
 Antenna on building 639' from DER, 382' right of centerline, 30' AGL/48' MSL.
 Multiple trees and bushes beginning 675' from DER, 97' left of centerline, up to 60' AGL/83' MSL.
 Light pole 1362' from DER, 390' right of centerline, 40' AGL/65' MSL
 Camera 2962' from DER, 48' right of centerline, 75' AGL/96' MSL.
 Multiple trees and bushes beginning 1261' from DER, 100' right of centerline, up to 60' AGL/78' MSL.
 Flagpole 1520' from DER, 753' left of centerline, 40' AGL/71' MSL.
 Sign 1996' from DER, 812' left of centerline, 45' AGL/78' MSL.
 Pole 1907' from DER, 120' left of centerline, 50' AGL/72' MSL.
 Rwy 1R: Tree 1927' from DER, 483' right of centerline, 65' AGL/131' MSL.
 Tree 1948' from DER, 222' right of centerline, 65' AGL/104' MSL.
 Pole 1552' from DER, 98' right of centerline, 25' AGL/67' MSL.
 Pole 1865' from DER, 358' right of centerline, 45' AGL/96' MSL.

(NOTES CONTINUED ON THE FOLLOWING PAGE)

(NARRATIVE ON FOLLOWING PAGE)

NOTE: ADF Required
 NOTE: Chart not to scale.

KANAN TWO DEPARTURE