

WAAS CH 53304 W01A	APP CRS 010°	Rwy Idg 4800 TDZE 980 Apt Elev 980
---------------------------------	------------------------	---

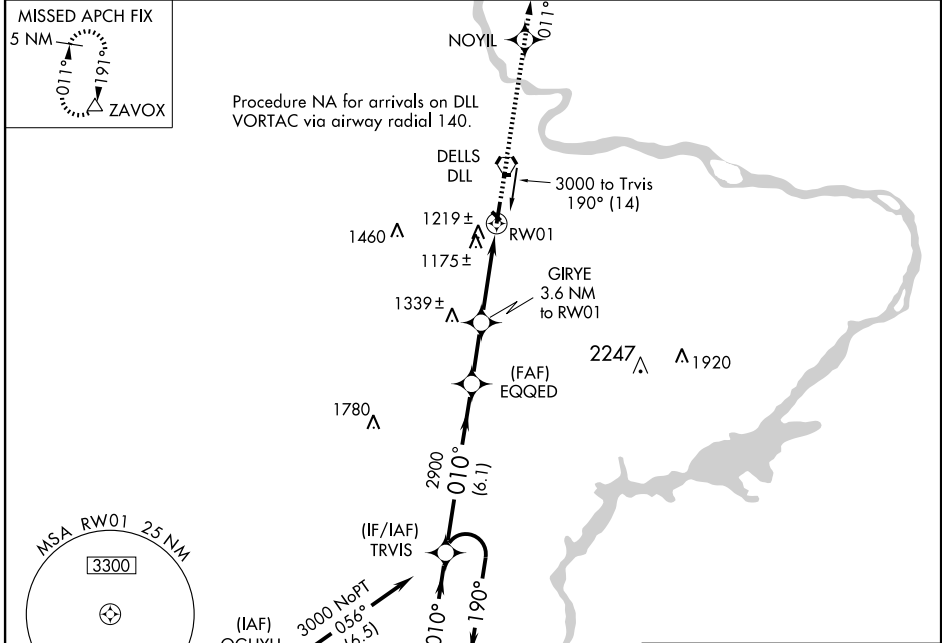
RNAV (GPS) RWY 1

BARABOO WISCONSIN DELLS (DLL)

▼ If local altimeter setting not received, use Tri-County Rgnl altimeter setting and increase all DAs 97 feet/MDAs 100 feet. Baro-VNAV NA when using Tri-County Rgnl altimeter setting.
▲ For uncompensated Baro-VNAV systems, LNAV/VNAV NA below -16°C (4°F) or above 54°C (130°F). DME/DME RNP-0.3 NA. Circling NA to Rwy 14-32.

MISSED APPROACH:
Climb to 3000 direct NOYIL and via 011° track to ZAVOX and hold.

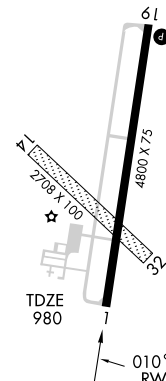
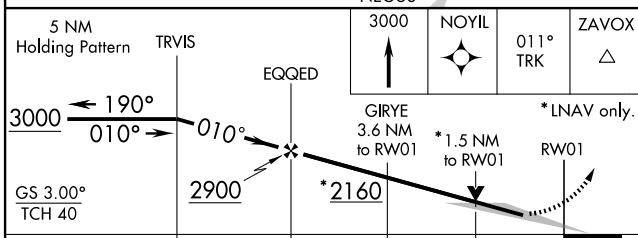
AWOS-3 118.325	MADISON APP CON * 135.45 343.7	UNICOM 123.05 (CTAF) 0
--------------------------	--	----------------------------------



EC-3, 22 OCT 2009 to 19 NOV 2009

EC-3, 22 OCT 2009 to 19 NOV 2009

ELEV 980
HIRL Rwy 1-19 0
REIL Rws 1 and 19 0



CATEGORY	A	B	C	D
LPV DA	1275-1	295 (300-1)		NA
LNAV/VNAV DA	1495-1¾	515 (600-1¾)		NA
LNAV MDA	1480-1	500 (500-1)	1480-1¼ 500 (500-1¼)	NA
CIRCLING	1540-1	560 (600-1)	1560-1½ 580 (600-1½)	NA