

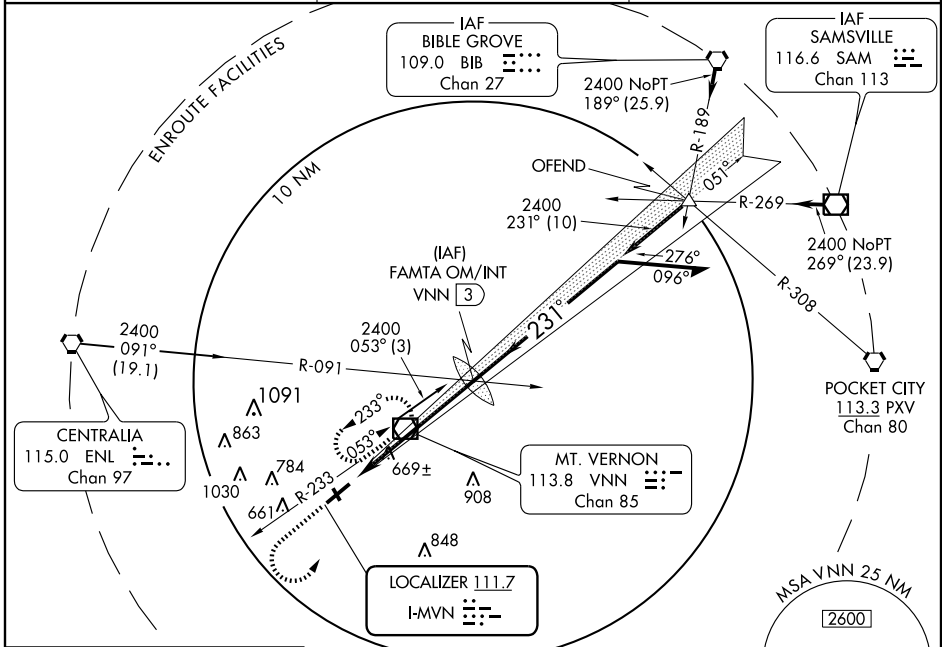
# ILS RWY 23

MOUNT VERNON (MVN)

LOC I-MVN <b>111.7</b>	APP CRS <b>231°</b>	Rwy ldg <b>6496</b>
		TDZE <b>471</b>
		Apt Elev <b>480</b>

	MALSR	MISSED APPROACH: Climb to 2400 then left turn direct VNN VOR/DME and hold.

AWOS-3 <b>113.8</b>	KANSAS CITY CENTER <b>127.7 317.7</b>	UNICOM <b>123.0 (CTAF)</b>
------------------------	--	-------------------------------



EC-3, 22 OCT 2009 to 19 NOV 2009

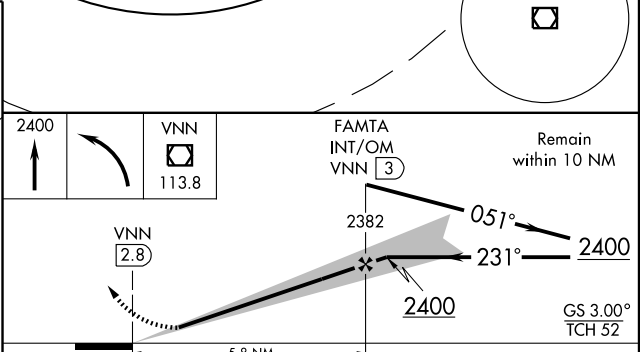
EC-3, 22 OCT 2009 to 19 NOV 2009

ELEV 480 **D**

HIRL Rwy 5-23 **D**  
MIRL Rwy 15-33 **D**

FAF to MAP 5.8 NM

Knots	60	90	120	150	180
Min:Sec	5:48	3:52	2:54	2:19	1:56



CATEGORY	A	B	C	D
S-ILS 23	671-1/2 200 (200-1/2)			
S-LOC 23	920-1/2 449 (500-1/2)	920-3/4 449 (500-3/4)	920-1 449 (500-1)	
CIRCLING	980-1 500 (500-1)	1000-1 520 (600-1/2)	1140-2 660 (700-2)	