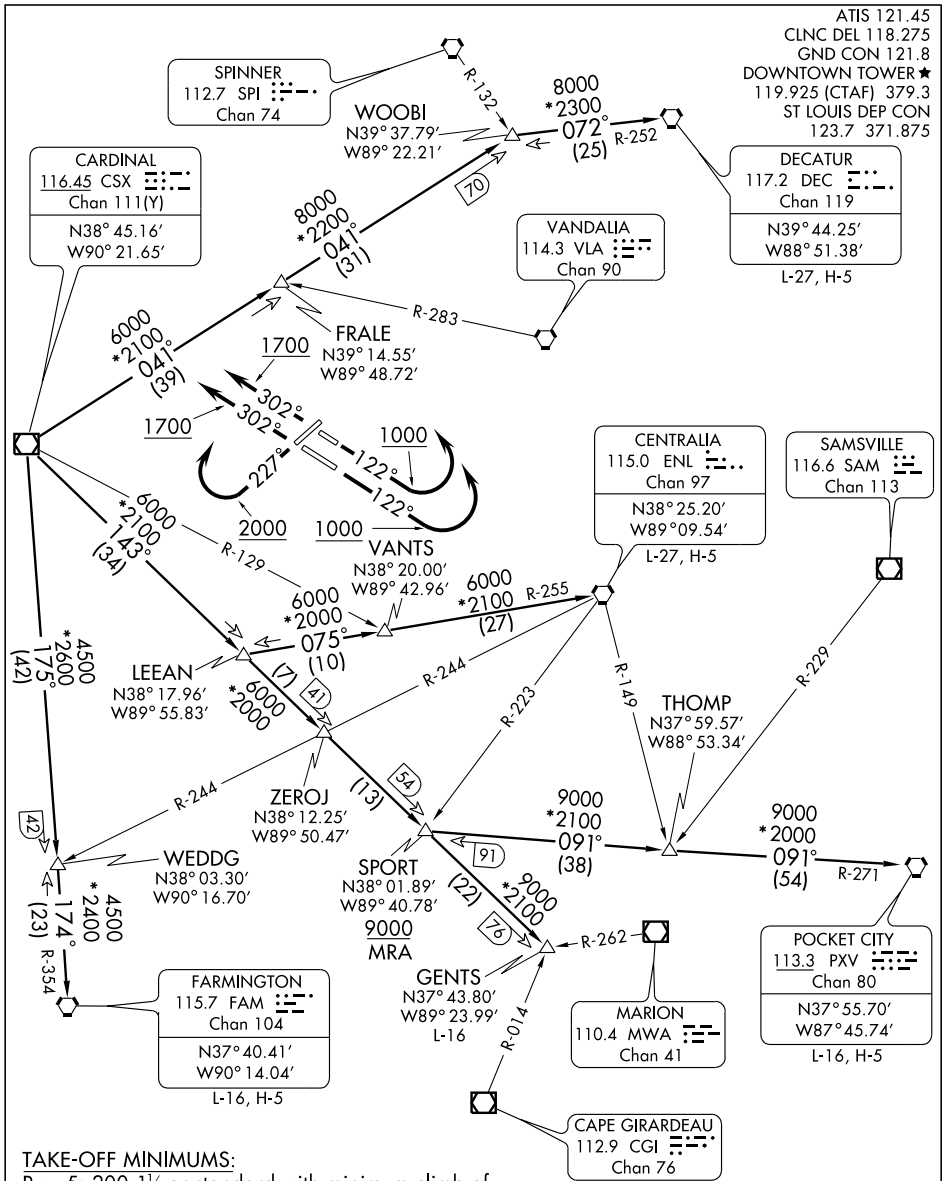


# TURBO FIVE DEPARTURE



EC-3, 22 OCT 2009 to 19 NOV 2009

EC-3, 22 OCT 2009 to 19 NOV 2009

**TAKE-OFF MINIMUMS:**  
 Rwy 5: 200-1¼ or standard with minimum climb of 343 feet per NM to 800.  
 Rwy 30L: 400-2½ or standard with minimum climb of 220 feet per NM to 900.  
 Rwy 12L, 12R, 23, 30R: STANDARD.

NOTE: RADAR Required.  
 NOTE: For Turboprop/Prop Aircraft only.  
 NOTE: Chart not to scale.

(NARRATIVE ON FOLLOWING PAGE)

# TURBO FIVE DEPARTURE