

# ILS or LOC RWY 30L

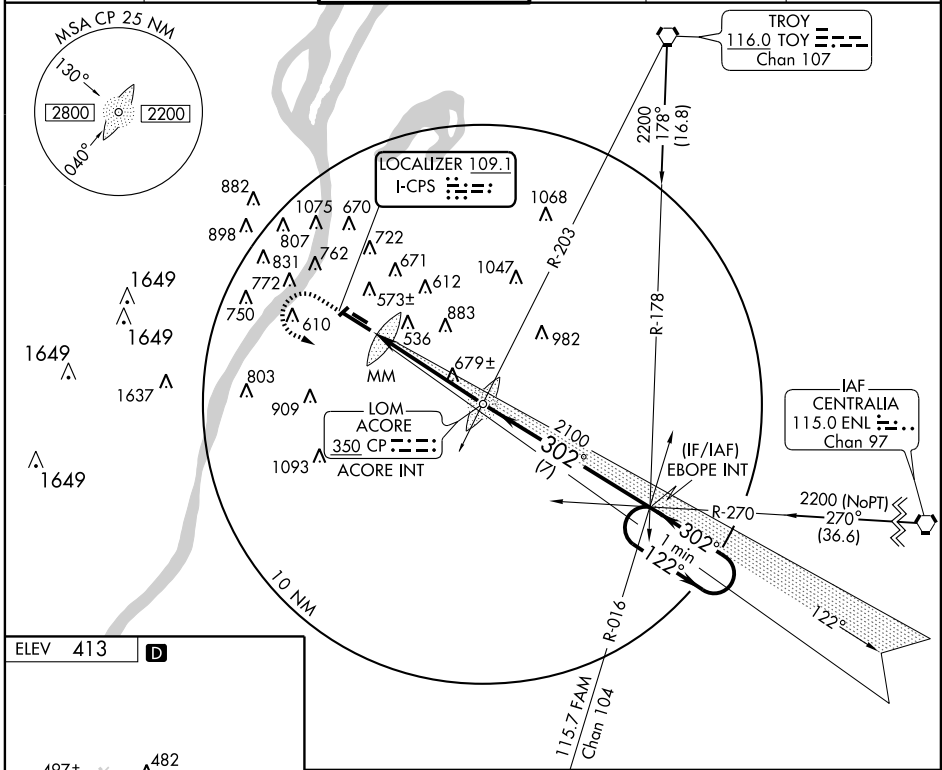
CAHOKIA/ST. LOUIS DOWNTOWN (CPS)

LOC I-CPS <b>109.1</b>	APP CRS <b>302°</b>	Rwy Idg TDZE Apt Elev	<b>6997</b> <b>412</b> <b>413</b>
---------------------------	------------------------	-----------------------------	-----------------------------------------

When local altimeter setting not received, use Lambert-St Louis Intl altimeter setting; increase DA to 674, increase all MDAs 80 feet, S-LOC 30L and circling visibility Cat. C/D ¼ mile. For inoperative MALSR increase Lambert-St Louis Intl altimeter setting S-ILS visibility ½ mile.

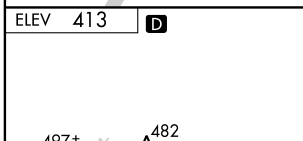
**MALSR** MISSED APPROACH: Climb to 1400 then climbing left turn to 2200 via heading 080° and via I-CPS SE course to EBOPE Int and hold.

ATIS <b>121.45</b>	ST LOUIS APP CON <b>123.7 371.875</b>	<b>DOWNTOWN TOWER *</b> <b>119.925 (CTAF) 0 379.3</b>	GND CON <b>121.8</b>	CLNC DEL <b>118.275</b>	UNICOM <b>122.95</b>
-----------------------	------------------------------------------	----------------------------------------------------------	-------------------------	----------------------------	-------------------------



EC-3, 22 OCT 2009 to 19 NOV 2009

EC-3, 22 OCT 2009 to 19 NOV 2009



ELEV 413	<b>D</b>	1400	2200	EBOPE INT	VGSI and ILS glidepath not coincident.	One Minute Holding Pattern
						GS 3.00° TCH 55

CATEGORY	A	B	C	D
S-ILS 30L	612-½		200 (200-½)	
S-LOC 30L	940-½	528 (600-½)	940-1 528 (600-1)	940-1¼ 528 (600-1¼)
CIRCLING	940-1	527 (600-1)	1000-1½ 587 (600-1½)	1080-2 667 (700-2)