

GATEWAY FOUR DEPARTURE

EC-3, 22 OCT 2009 to 19 NOV 2009

DEPARTURE ROUTE DESCRIPTION

Fly assigned heading vector to appropriate route. From over CSX VOR/DME via CSX R-087 or over TOY VORTAC via TOY R-076 or over STL VORTAC via STL R-094 to TWILA INT. Departures climb and maintain 2500 feet or assigned altitude. Expect clearance to filed altitude 10 minutes after departure.

BIBLE GROVE TRANSITION (GATWY4.BIB): From over TWILA INT via TOY R-076 and BIB R-258 to BIB VORTAC.

BRICKYARD TRANSITION (GATWY4.VHP): From over TWILA INT via TOY R-076 and BIB R-258 to BIB VORTAC, then via BIB R-067 and SHB R-251 to KELLY INT, then via VHP R-209 to VHP VORTAC. CREEP TRANSITION (GATWY4.CREEP): From over TWILA INT via TOY R-076 and BIB R-258 to BIB VORTAC, then via BIB R-067 and SHB R-251 to SHB VORTAC, then via SHB R-075 to CREEP INT.

JIGSY TRANSITION (GATWY4.JIGSY): From over TWILA INT via TOY R-076 to JIGSY INT.

ROSEWOOD TRANSITION (GATWY4.ROD): From over TWILA INT via TOY R-076 and BIB R-258 to BIB VORTAC, then via BIB R-067 and SHB R-251 to SHB VORTAC, then via SHB R-063 and ROD R-250 to ROD VORTAC.

ATIS
121.45
CINC DEL
118.275
GND CON
121.8
DOWNTOWN TOWER *
119.925 (CTAF) 379.3
ST LOUIS DEP CON
123.7 371.875

ROSEWOOD
117.5 ROD
Chan 122
N40°17.27'
W84°02.59'
L-27, H-10

BRICKYARD
116.3 VHP
Chan 110
N39°48.88'
W86°22.05'
L-27, H-5-10

TERRE HAUTE
115.3 TH
Chan 100

MATTOON
109.4 MTO
Chan 31

BIBLE GROVE
109.0 BIB
Chan 27
N38°55.22'
W88°28.92'
L-27, H-5

CARDINAL
116.45 CSX
Chan 111(V)
N38°45.16'-W90°21.65'

ST. LOUIS
117.4 STL
Chan 121
N38°51.64'-W90°28.94'

CENTRALIA
115.0 ENL
Chan 97

TOY
116.0 TOY
Chan 107
N38°44.35'-W89°55.12'

SHELBYVILLE
112.0 SHB
Chan 57
N39°37.95'
W85°49.46'

KELLY
N39°24.82'
W86°40.29'

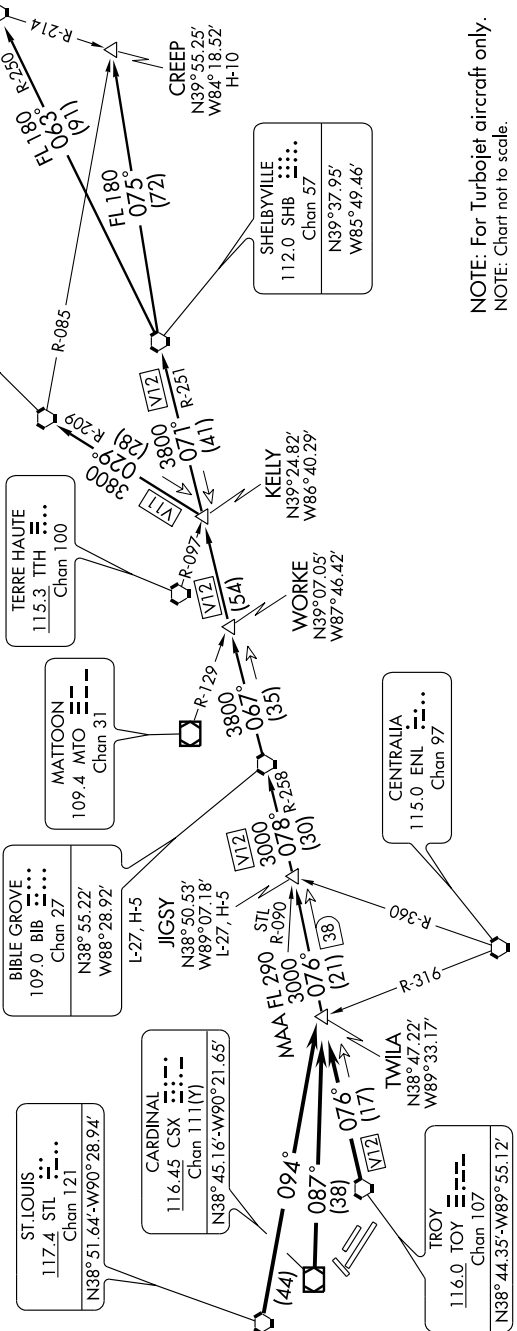
WORKE
N39°07.05'
W87°46.42'

JIGSY
N38°50.53'
W89°07.18'
L-27, H-5

MAA
FL 290 STL
3000
078 R-090
076 (21) (38)

TWILA
N38°47.22'
W89°33.17'

CREEP
N39°55.25'
W84°18.52'
H-10



NOTE: For Turbojet aircraft only.
NOTE: Chart not to scale.