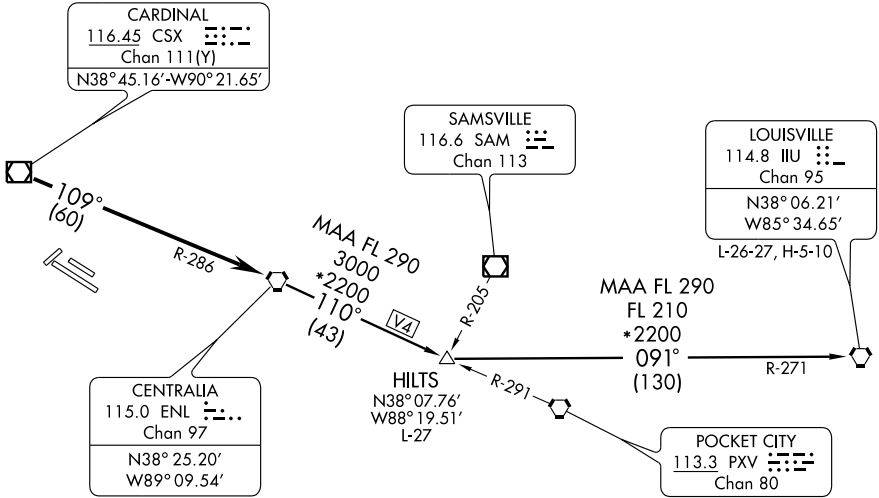


BLUES TWO DEPARTURE

ATIS 121.45
 CLNC DEL 118.275
 GND CON 121.8
 DOWNTOWN TOWER ★
 119.925 (CTAF) 379.3
 ST LOUIS DEP CON
 123.7 371.875



EC-3, 22 OCT 2009 to 19 NOV 2009

EC-3, 22 OCT 2009 to 19 NOV 2009

NOTE: For Turbojets only.
 NOTE: Chart not to scale.

DEPARTURE ROUTE DESCRIPTION

Fly assigned heading for vector to appropriate route. From over CSX VOR/DME via CSX R-109 and ENL R-286 to ENL VORTAC. Then via (transition) or (assigned) route. Departures climb and maintain 2500 feet or assigned altitude. Expect clearance to filed altitude 10 minutes after departure.

HILTS TRANSITION (BLUES2.HILTS): From over ENL VORTAC via ENL R-110 to HILTS INT.

LOUISVILLE TRANSITION (BLUES2.IIU): From over ENL VORTAC via ENL R-110 to HILTS INT, then via IIU R-271 to IIU VORTAC.

BLUES TWO DEPARTURE