

# RNAV (GPS) RWY 32

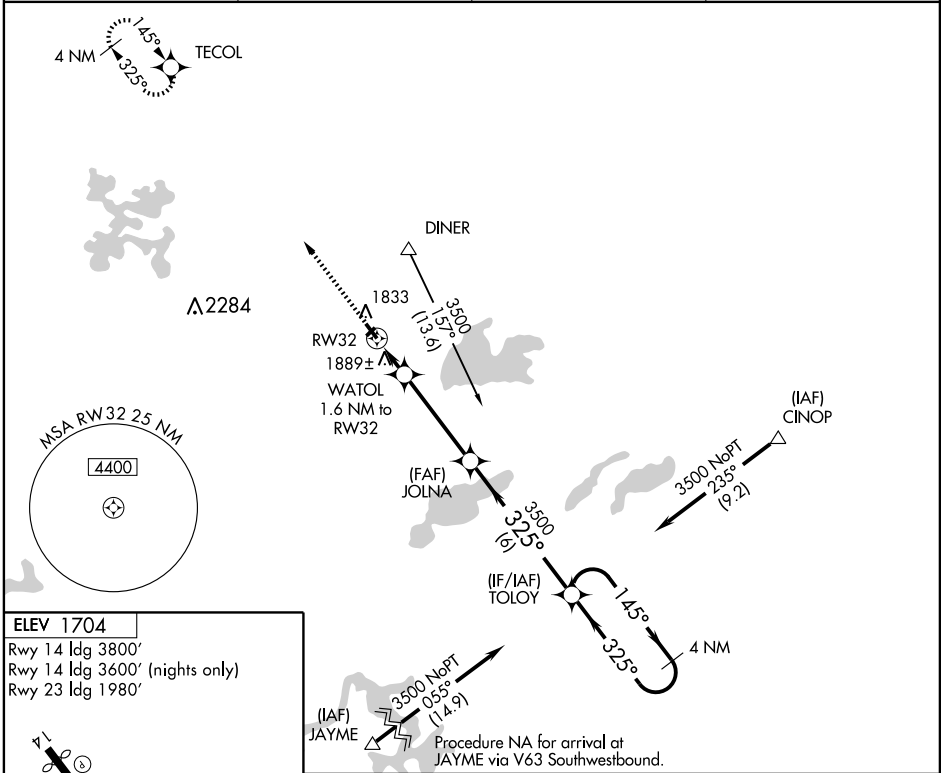
LAND O'LAKES/ KINGS LAND O'LAKES (LNL)

APP CRS <b>325°</b>	Rwy ldg <b>4000</b> TDZE <b>1704</b> Apt Elev <b>1704</b>
------------------------	---

**▼** If local altimeter setting not received, use Eagle River Union altimeter setting and increase all MDAs 40 feet.  
**▲** Straight-in minimums NA at night.  
 Circling to Rwy's 5, 23, and 32 NA at night.  
 DME/DME RNP-0.3 NA.

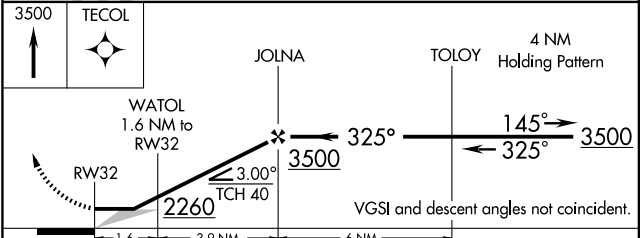
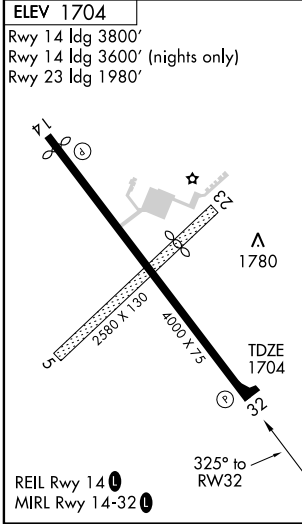
MISSED APPROACH: Climb to 3500 direct TECOL and hold.

AWOS-3 <b>119.525</b>	MINNEAPOLIS CENTER <b>133.65 281.5</b>	GCO <b>121.725</b>	UNICOM <b>122.8 (CTAF) 0</b>
--------------------------	---	-----------------------	---------------------------------



EC-3, 22 OCT 2009 to 19 NOV 2009

EC-3, 22 OCT 2009 to 19 NOV 2009



CATEGORY	A	B	C	D
LNNAV MDA	2140-1	436 (500-1)	2140-1¼ 436 (500-1¼)	NA
CIRCLING	2200-1 496 (500-1)	2240-1 536 (600-1)	2240-1½ 536 (600-1½)	NA