

APP CRS	Rwy ldg	<b>3800</b> (day)
<b>145°</b>	TDZE	<b>3600</b> (night)
	Apt Elev	<b>1704</b>

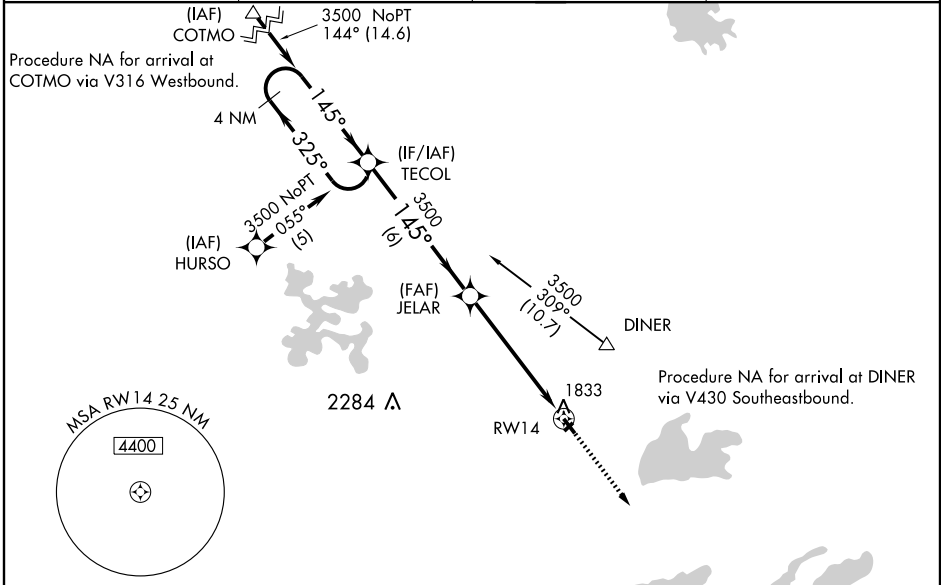
# RNAV (GPS) RWY14

LAND O'LAKES/ KINGS LAND O'LAKES (LNL)

**▼** If local altimeter setting not received, use Eagle River Union altimeter setting and increase all MDAs 40 feet.  
**▲** VDP NA with Eagle River Union altimeter setting.  
 Circling to Rwy 5, 23 and 32 NA at night.  
 DME/DME RNP- 0.3 NA.

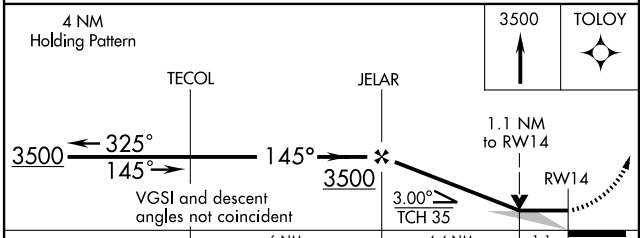
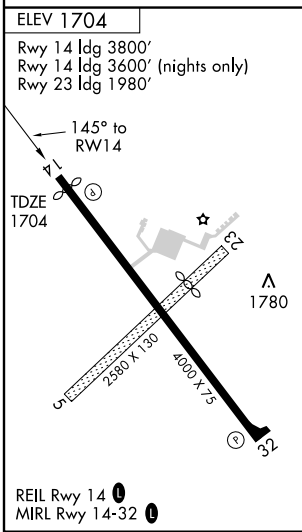
MISSED APPROACH: Climb to 3500 direct TOLOY and hold.

AWOS-3 <b>119.525</b>	MINNEAPOLIS CENTER <b>133.65 281.5</b>	GCO <b>121.725</b>	UNICOM <b>122.8 (CTAF) 0</b>
--------------------------	---	-----------------------	---------------------------------



EC-3, 22 OCT 2009 to 19 NOV 2009

EC-3, 22 OCT 2009 to 19 NOV 2009



CATEGORY	A	B	C	D
LNAV MDA	2220-1	516 (600-1)	2220-1½ 516 (600-1½)	NA
CIRCLING	2220-1 516 (600-1)	2240-1 536 (600-1)	2240-1½ 536 (600-1½)	NA