

# NDB RWY 14

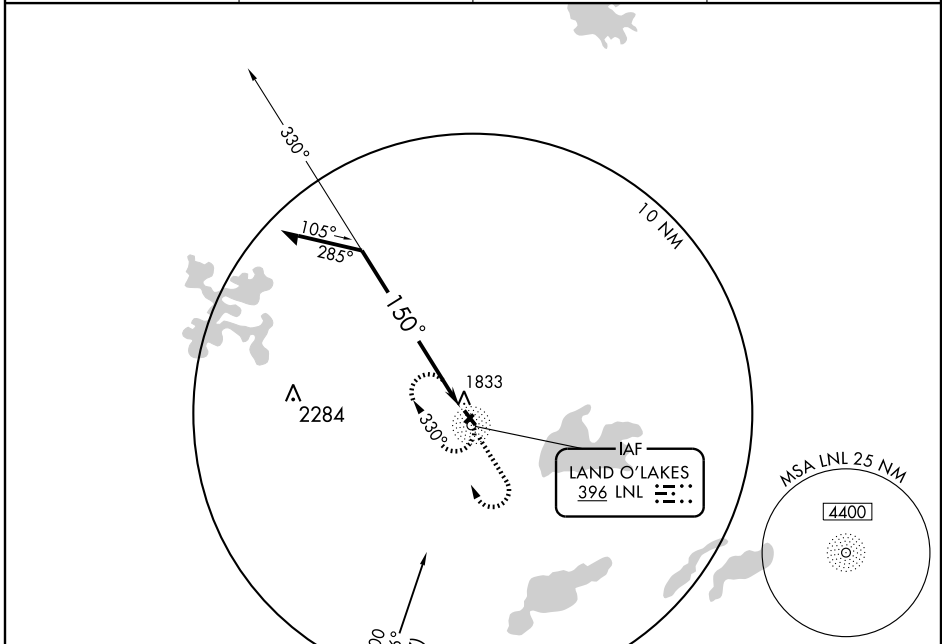
LAND O'LAKES/ KINGS LAND O'LAKES (LNL)

NDB LNL <b>396</b>	APP CRS <b>150°</b>	Rwy Idg	<b>3800</b> (day)
			<b>3600</b> (night)
		TDZE	<b>1704</b>
		Apt Elev	<b>1704</b>

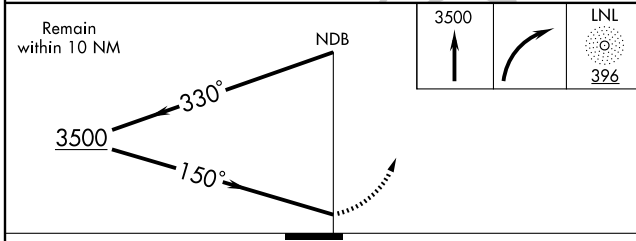
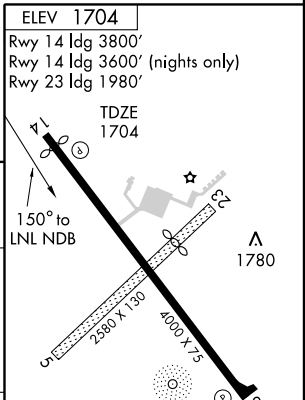
**⚠** If local altimeter setting not received, use Eagle River Union altimeter setting and increase all MDAs 40 feet.  
**⚠ NA** Circling to Rwy 5, 23, and 32 not authorized at night.

**MISSED APPROACH:** Climb to 3500, then right turn direct LNL NDB and hold.

AWOS-3 <b>119.525</b>	MINNEAPOLIS CENTER <b>133.65 281.5</b>	GCO <b>121.725</b>	UNICOM <b>122.8</b> (CTAF) <b>0</b>
--------------------------	---	-----------------------	--



**RHINELANDER**  
109.2 RHI  
Chan 29



CATEGORY	A	B	C	D
S-14	2320-1	616 (700-1)	2320-1¼ 616 (700-1¾)	NA
CIRCLING	2320-1	616 (700-1)	2320-1¼ 616 (700-1¾)	NA

REIL Rwy 14 <b>0</b>	MIRL Rwy 14-32 <b>0</b>				
Knots	60	90	120	150	180
Min:Sec					

# NDB RWY 14

EC-3, 22 OCT 2009 to 19 NOV 2009

EC-3, 22 OCT 2009 to 19 NOV 2009