

# RNAV (GPS) RWY 20

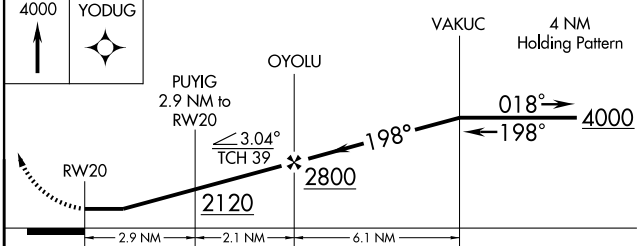
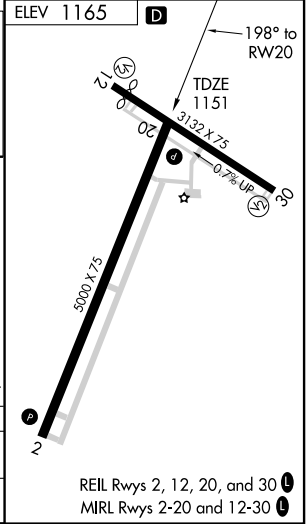
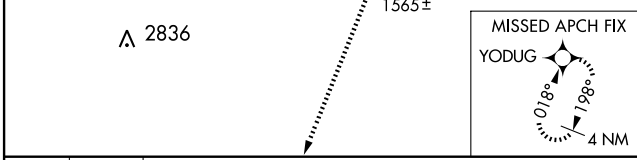
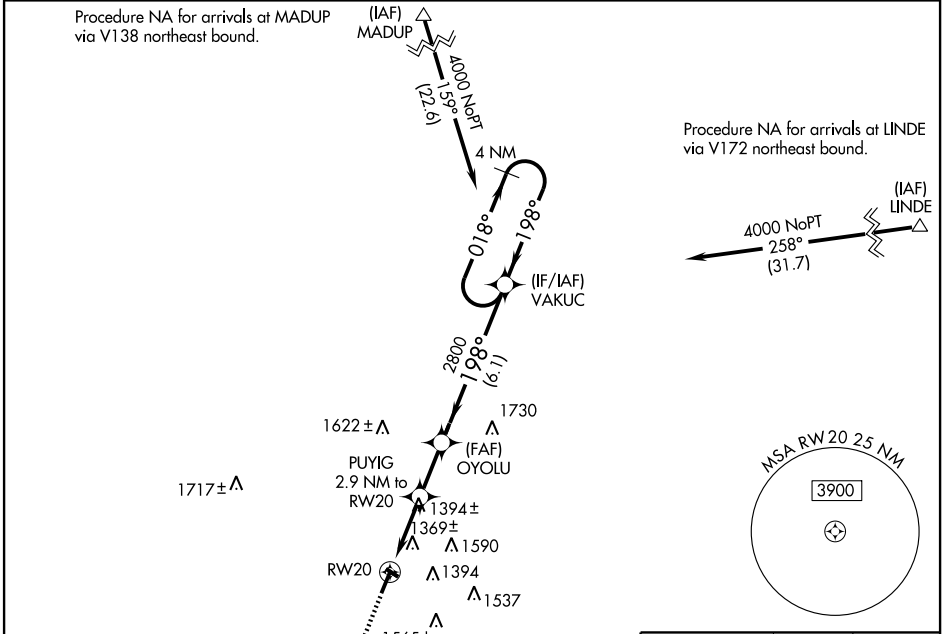
ATLANTIC MUNI (AIO)

APP CRS <b>198°</b>	Rwy Idg <b>5000</b>
	TDZE <b>1151</b>
	Apt Elev <b>1165</b>

**⚠** DME/DME RNP -0.3 NA. Visibility reduction by helicopters NA.  
**⚠** When local altimeter setting not received, use Harlan altimeter setting and increase all MDA 60 feet, increase LNAV Cat D and circling Cat C and D visibility ¼ mile.

**MISSED APPROACH:** Climb to 4000 direct YODUG and hold.

AWOS-3 <b>127.825</b>	MINNEAPOLIS CENTER <b>119.6 290.4</b>	UNICOM <b>122.7 (CTAF) 0</b>
--------------------------	--	---------------------------------



CATEGORY	A	B	C	D
LNAV MDA	1660-1	509 (500-1)	1660-1½	509 (500-1½)
CIRCLING	1720-1	555 (600-1)	1760-1½	1940-2½
			595 (600-1½)	775 (800-2½)

REIL Rwy 2, 12, 20, and 30  
MRL Rwy 2-20 and 12-30

NC-3, 22 OCT 2009 to 19 NOV 2009

NC-3, 22 OCT 2009 to 19 NOV 2009