

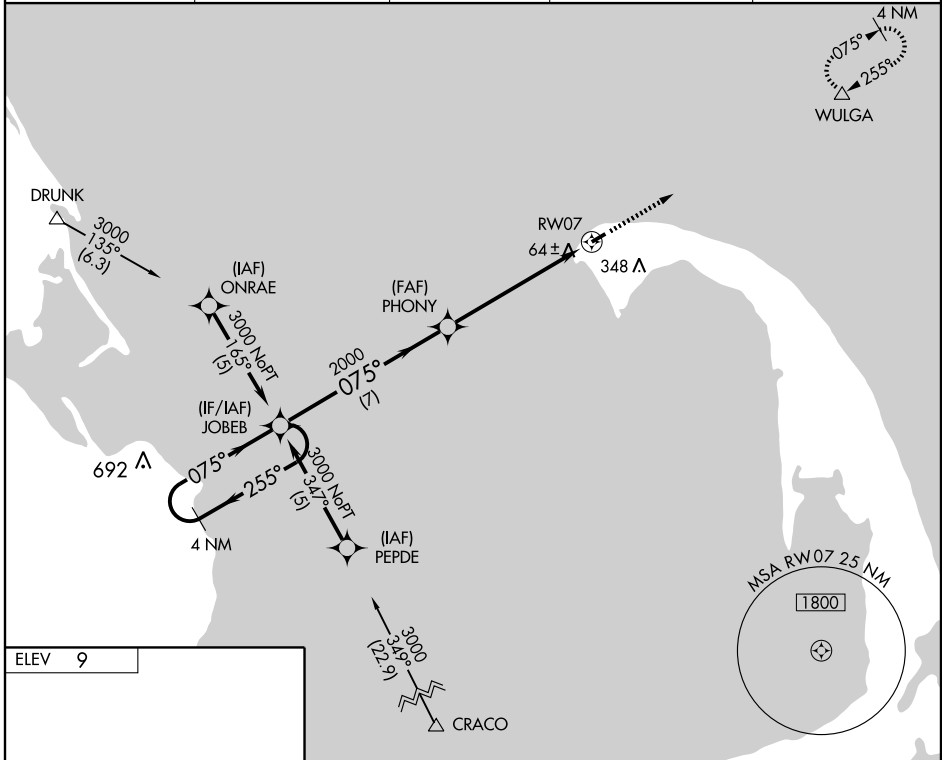
RNAV (GPS) RWY 7

PROVINCETOWN MUNI (PVC)

APP CRS 075°	Rwy Idg TDZE Apt Elev	3500 9 9
------------------------	-----------------------------	-------------------------------------

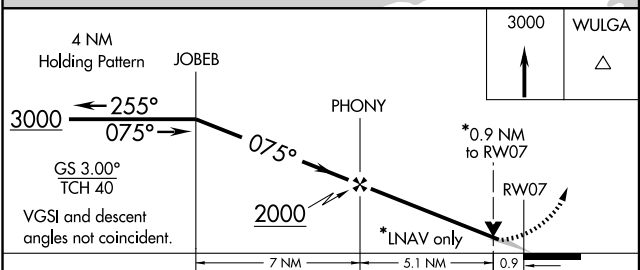
<p>▼ If local altimeter setting not received, use Hyannis altimeter setting and increase all DA/MDAs 80 feet. ▲ NA BARO-VNAV NA below -1.5C (5°F). W GPS or RNP-0.3 required. DME/DME RNP-0.3 NA.</p>	<p>MALSF</p>	<p>MISSED APPROACH: Climb to 3000 direct WULGA WP and hold.</p>
--	---------------------	---

AWOS-3 119.025	CAPE APP CON ★ 118.2	CLNC DEL 120.65	UNICOM 122.8 (CTAF)	122.85 0
--------------------------	--------------------------------	---------------------------	-------------------------------	-----------------



NE-1, 22 OCT 2009 to 19 NOV 2009

NE-1, 22 OCT 2009 to 19 NOV 2009



CATEGORY	A	B	C	D
GLS PA DA	NA			
LNAV/VNAV DA	280- ³ / ₄	271 (300- ³ / ₄)	NA	
LNAV MDA	320- ³ / ₄	311 (400- ³ / ₄)	NA	
CIRCLING	460-1	451 (500-1)	NA	