

NDB PVC	APP CRS	Rwy Idg	3500
389	247°	TDZE	9
		Apt Elev	9

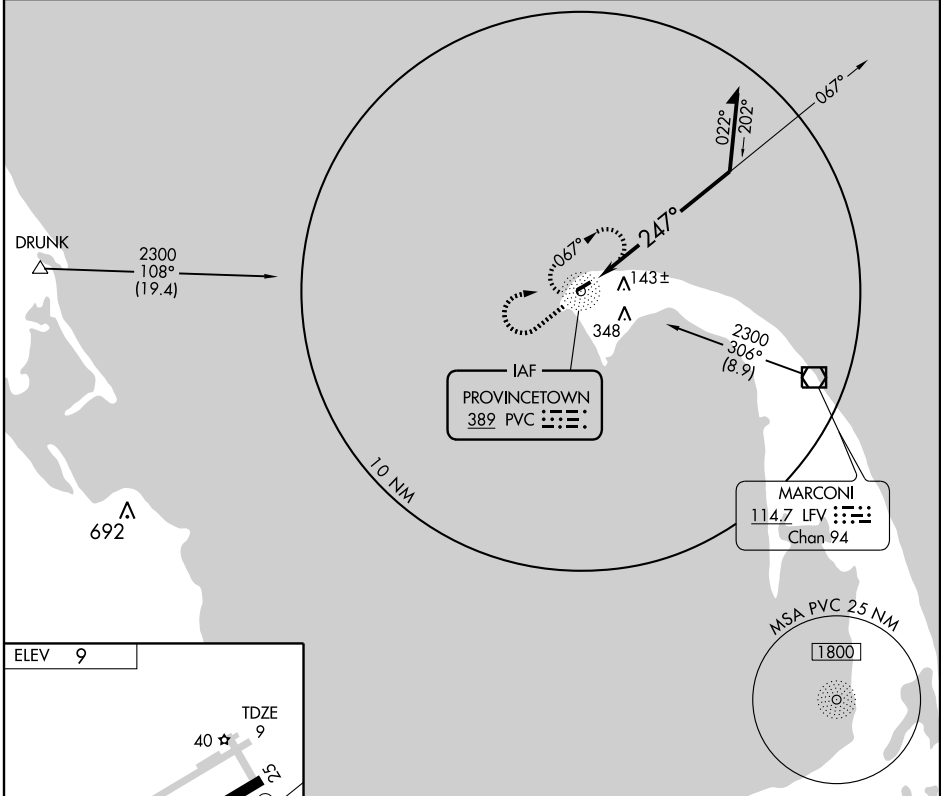
NDB RWY 25

PROVINCETOWN MUNI (PVC)

▼ If local altimeter setting not received, use Hyannis altimeter setting and increase all MDAs 80 feet.

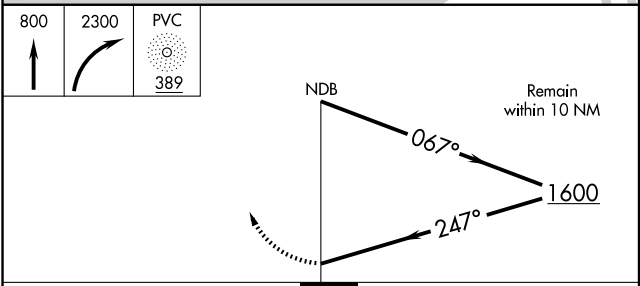
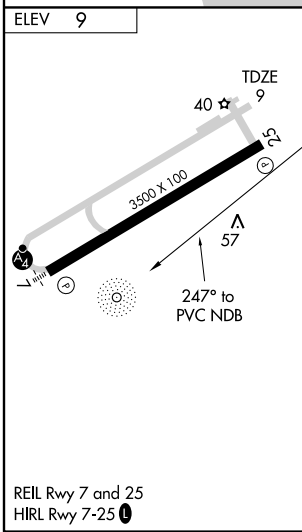
MISSED APPROACH: Climb to 800 then climbing right turn to 2300 direct PVC NDB and hold.

AWOS-3 119.025	CAPE APP CON ★ 118.2	CLNC DEL 120.65	UNICOM 122.8 (CTAF)	122.85 ①
--------------------------	--------------------------------	---------------------------	-------------------------------	-----------------



NE-1, 22 OCT 2009 to 19 NOV 2009

NE-1, 22 OCT 2009 to 19 NOV 2009



CATEGORY	A	B	C	D
S-25	500-1	491 (500-1)		NA
CIRCLING	500-1	491 (500-1)		NA