

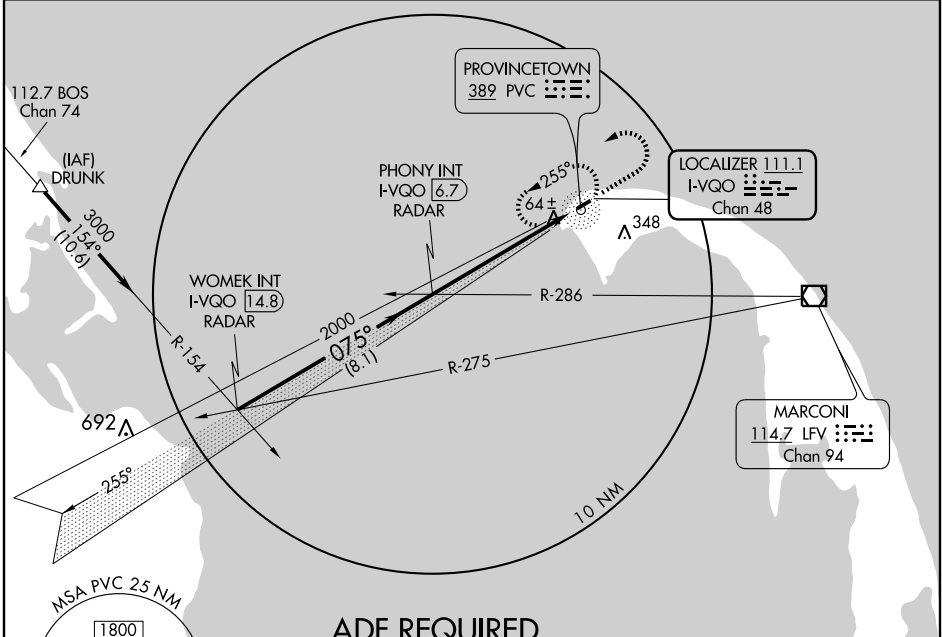
LOC/DME I-VQO 111.1 Chan 48	APP CRS 075°	Rwy Idg 3500 TDZE 9 Apt Elev 9
--	------------------------	---

ILS RWY 7

PROVINCETOWN MUNI (PVC)

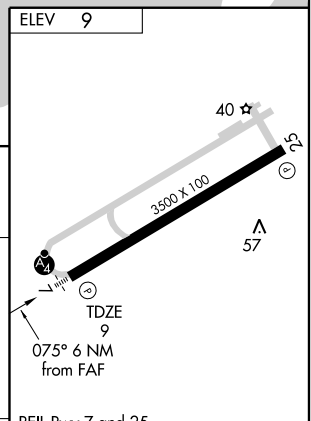
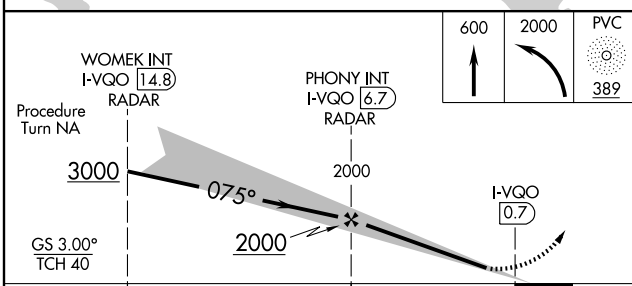
NA If local altimeter setting not received, use Hyannis altimeter setting and increase all DH/MDAs 80 feet. **MALSF** MISSED APPROACH: Climb to 600 then climbing left turn to 2000 direct PVC NDB and hold.

AWOS-3 119.025	CAPE APP CON * 118.2	CLNC DEL 120.65	UNICOM 122.8 (CTAF)	122.85 0
--------------------------	--------------------------------	---------------------------	-------------------------------	------------------------



NE-1, 22 OCT 2009 to 19 NOV 2009

NE-1, 22 OCT 2009 to 19 NOV 2009



CATEGORY	A	B	C	D
S-ILS 7	209-¾	200 (200-¾)		NA
S-LOC 7	320-¾	311 (400-¾)		NA
CIRCLING	460-1	451 (500-1)		NA

REIL Rwy 7 and 25
HIRL Rwy 7-25 **0**

FAF to MAP 6 NM

Knots	60	90	120	150	180
Min:Sec	6:00	4:00	3:00	2:24	2:00