

# RNAV (GPS) RWY 28

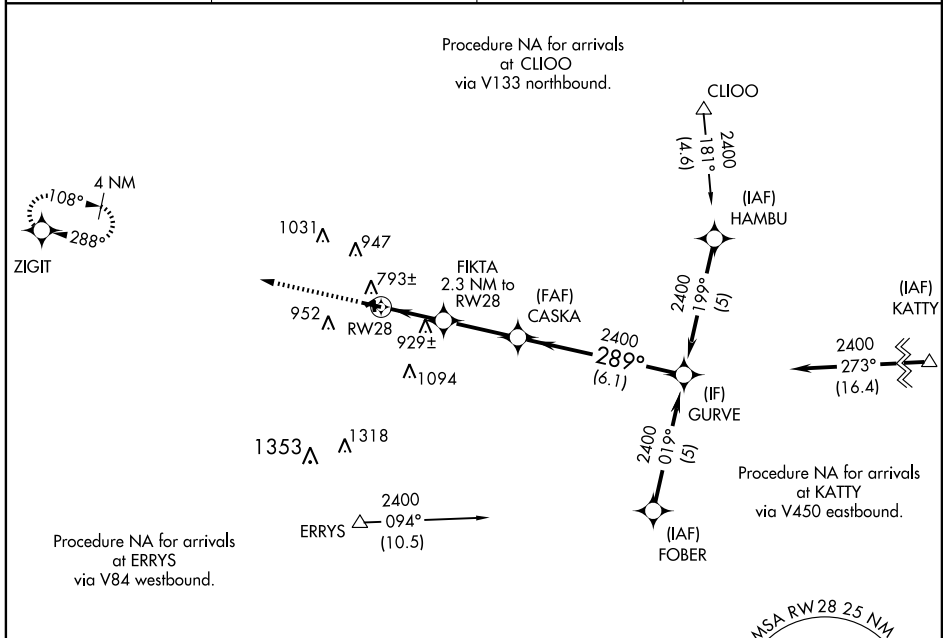
OWOSSO COMMUNITY (RNP)

APP CRS	Rwy ldg	<b>4300</b>
<b>289°</b>	TDZE	<b>736</b>
	Apt Elev	<b>736</b>

**▽** Circling to Rwy 6-24 and 18-36 NA. When local altimeter setting not received, use Flint altimeter setting and increase all MDA 60 feet and LNAV Cat C visibility ¼ mile. DME/DME RNP-0.3 NA. Visibility reduction by helicopters NA.

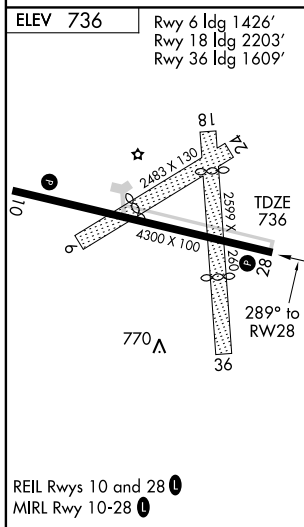
**▲** MISSED APPROACH: Climb to 2600 direct ZIGIT and hold.

AWOS-3 <b>118.025</b>	FLINT APP CON <b>118.8 257.9</b>	GCO <b>121.725</b>	UNICOM <b>123.0 (CTAF) 0</b>
--------------------------	-------------------------------------	-----------------------	---------------------------------



EC-1, 22 OCT 2009 to 19 NOV 2009

EC-1, 22 OCT 2009 to 19 NOV 2009



2600 ZIGIT VGSI and descent angles not coincident.

	A	B	C	D
CATEGORY	A	B	C	D
LNAV MDA	1180-1	444 (500-1)	1180-1¼ 444 (500-1¼)	NA
CIRCLING	1240-1	504 (600-1)	1260-1½ 524 (600-1½)	NA