

# RNAV (GPS) RWY 10

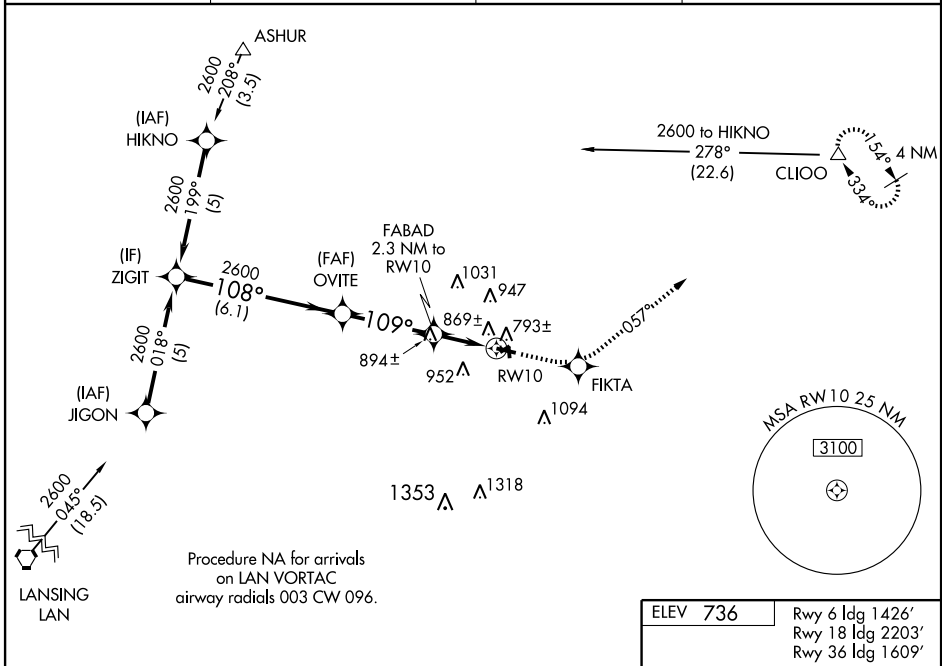
OWOSSO COMMUNITY (RNP)

WAAS CH <b>50209</b> <b>W10A</b>	APP CRS <b>109°</b>	Rwy Idg TDZE Apt Elev	<b>4300</b> <b>736</b> <b>736</b>
--	------------------------	-----------------------------	---

**⚠** Circling to Rwy 6-24 and 18-36 NA. When local altimeter setting not received, use Flint altimeter setting and increase all DA 47 feet and LPV visibility ¼ mile all Cats, increase all MDA 60 feet and LNAV Cat C visibility ¼ mile. Baro-VNAV NA when using Flint altimeter setting. For uncompensated Baro-VNAV systems, LNAV/VNAV NA below -16°C (4°F) or above 54°C (130°F). DME/DME RNP-0.3 NA. Visibility reduction by helicopters NA.

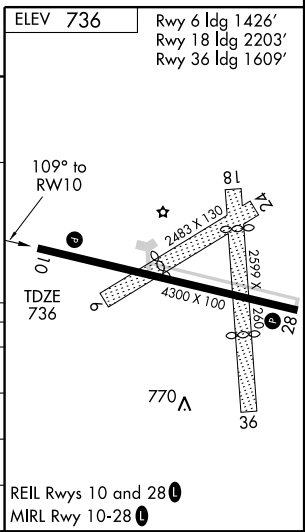
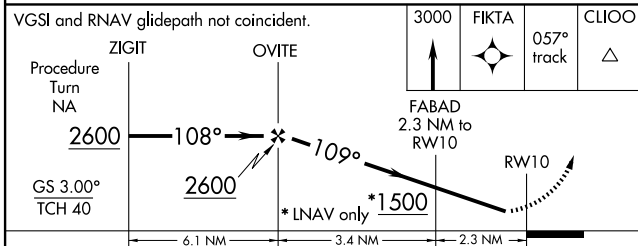
**⚠** MISSED APPROACH: Climb to 3000 direct FIKTA and via 057° track to CLIOO and hold.

AWOS-3 <b>118.025</b>	FLINT APP CON <b>118.8 257.9</b>	GCO <b>121.725</b>	UNICOM <b>123.0</b> (CTAF) <b>0</b>
--------------------------	-------------------------------------	-----------------------	--



EC-1, 22 OCT 2009 to 19 NOV 2009

EC-1, 22 OCT 2009 to 19 NOV 2009



CATEGORY	A	B	C	D
LPV DA	1079-1¼ 343 (400-1¼)			NA
LNAV/VNAV DA	1258-2 522 (600-2)			NA
LNAV MDA	1180-1 444 (500-1)	1180-1¼ 444 (500-1¼)		NA
CIRCLING	1240-1 504 (600-1)	1260-1½ 524 (600-1½)		NA