

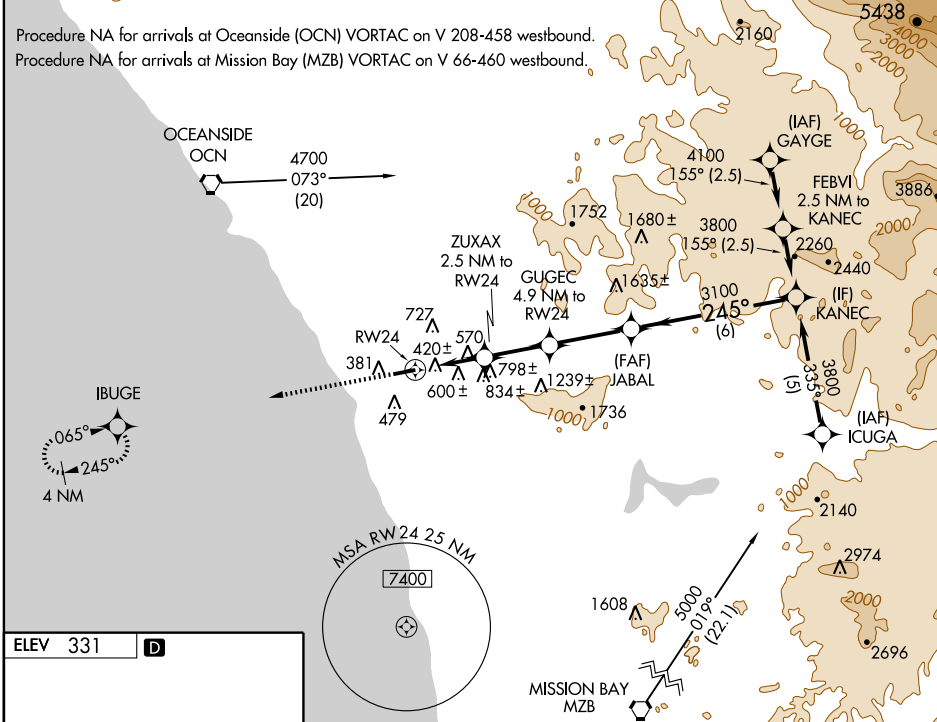
RNAV (GPS) RWY 24
CARLSBAD/MC CLELLAN-PALOMAR (CRQ)

WAAS CH 65603 W24A	APP CRS 245°	Rwy Idg TDZE 326 Apt Elev 331	4897
--	------------------------	---	-------------

V DME/DME RNP-0.3 NA.
A For uncompensated Baro-VNAV systems, LNAV/VNAV NA below -1.5°C (5°F) or above 54°C (130°F).

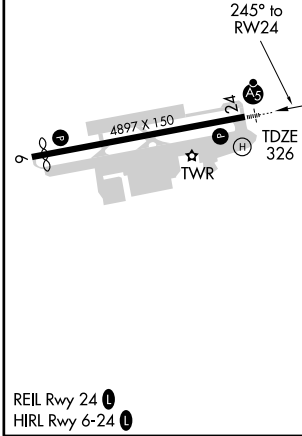
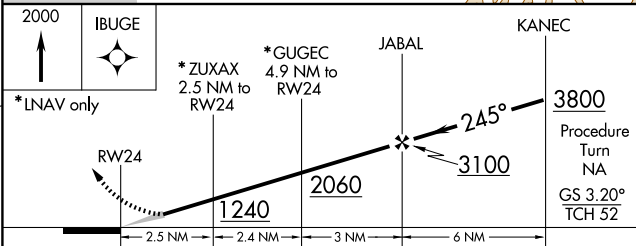
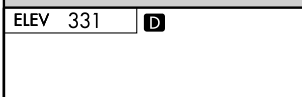
MALSR
AS
MISSED APPROACH: Climb to 2000 direct IBUGE WP and hold.

ATIS 120.15	SOCAL APP CON 127.3 323.0	PALOMAR TOWER* 118.6 (CTAF) 0 276.4	GND CON 121.8	CLNC DEL 134.85
-----------------------	-------------------------------------	--	-------------------------	---------------------------



SW-3, 22 OCT 2009 to 19 NOV 2009

SW-3, 22 OCT 2009 to 19 NOV 2009



CATEGORY	A	B	C	D
LPV DA	737/40 411 (500-¾)			NA
LNAV/VNAV DA	1387-2	1061 (1100-2)	1387-3 1061 (1100-3)	NA
LNAV MDA	1100/40	774 (800-¾)	1100-1¾ 774 (800-1¾)	NA
CIRCLING	1100-1 769 (800-1)	1100-1¼ 769 (800-1¼)	1100-2¼ 769 (800-2¼)	NA