

ILS or LOC RWY 24

CARLSBAD/MC CLELLAN-PALOMAR (CRQ)

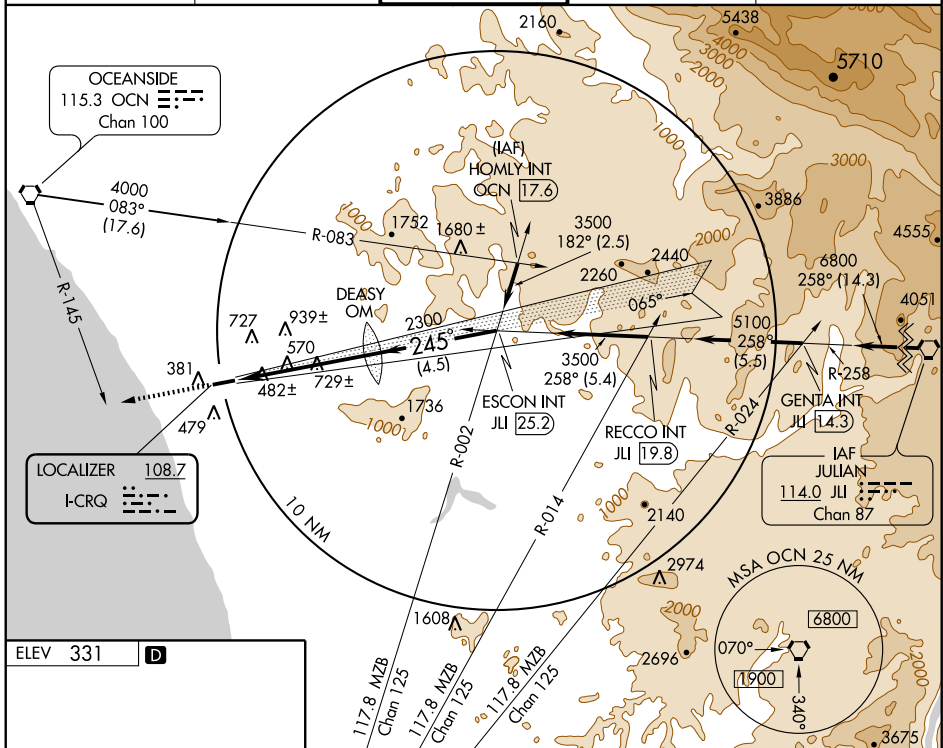
LOC I-CRQ 108.7	APP CRS 245°	Rwy Idg 4897	TDZE 326
		Apt Elev 331	

▼ Inoperative table does not apply to S-ILS 24.
▲ For inoperative MALSRS increase S-ILS 24 Cat C visibility to RVR 5000. Increase S-LOC 24 Cat A/B visibility to RVR 5000.



MISSED APPROACH: Climb to 3000 via heading 245° and OCN R-145 to OCN VORTAC.

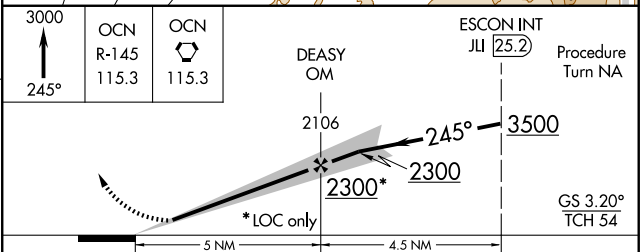
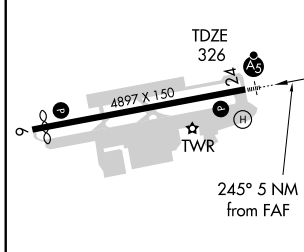
ATIS 120.15	SOCAL APP CON 127.3 323.0	PALOMAR TOWER * 118.6 (CTAF) 0 276.4	GND CON 121.8	CLNC DEL 134.85
-----------------------	-------------------------------------	---	-------------------------	---------------------------



SW-3, 22 OCT 2009 to 19 NOV 2009

SW-3, 22 OCT 2009 to 19 NOV 2009

ELEV 331	D
----------	----------



REIL Rwy 24	1
HIRL Rwy 6-24	1
FAF to MAP 5 NM	
Knots	60 90 120 150 180
Min:Sec	5:00 3:20 2:30 2:00 1:40

CATEGORY	A	B	C	D
S-ILS 24	526/40	200 (200-¾)	576/40 250 (300-¾)	NA
S-LOC 24	1000/40	674 (700-¾)	1000-1½ 674 (700-1½)	NA
CIRCLING	1000-1	669 (700-1)	1080-2¼ 749 (800-2¼)	NA