

SPENCER, IOWA

AL-5309 (FAA)

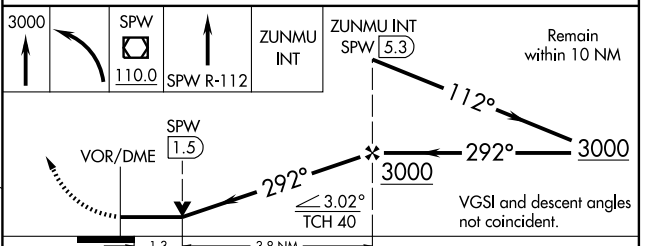
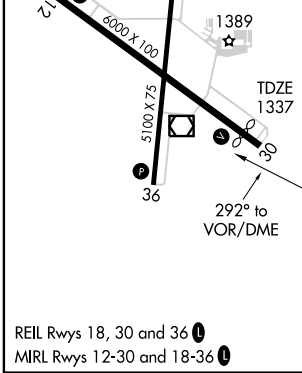
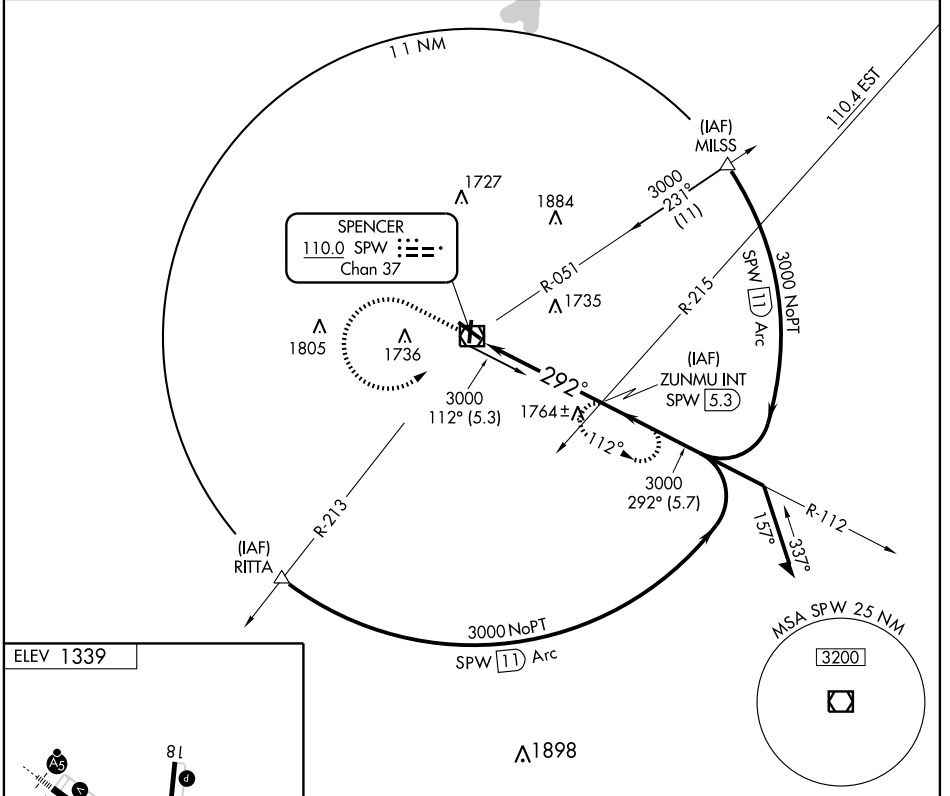
VOR/DME SPW <b>110.0</b> Chan 37	APP CRS <b>292°</b>	Rwy Idg TDZE Apt Elev	<b>5500</b> <b>1337</b> <b>1339</b>
--	------------------------	-----------------------------	---

# VOR RWY 30

SPENCER MUNI (SPW)

**A** MISSED APPROACH: Climb to 3000, then left turn direct SPW VOR/DME, then via SPW R-112 to ZUNMU INT/ SPW 5.3 DME and hold.

ASOS <b>126.625</b>	MINNEAPOLIS CENTER <b>127.75 257.7</b>	UNICOM <b>123.0 (CTAF)</b>
------------------------	---	-------------------------------



CATEGORY	A	B	C	D
S-30	1780-1	443 (500-1)	1780-1¼ 443 (500-1¼)	1780-1½ 443 (500-1½)
CIRCLING	1780-1 441 (500-1)	1800-1 461 (500-1)	1800-1½ 461 (500-1½)	2040-2¼ 701 (800-2¼)

SPENCER, IOWA  
Amdt 3 09071

43°10'N-95°12'W

# SPENCER MUNI (SPW) VOR RWY 30

NC-3, 22 OCT 2009 to 19 NOV 2009

NC-3, 22 OCT 2009 to 19 NOV 2009