

SPENCER, IOWA

AL-5309 (FAA)

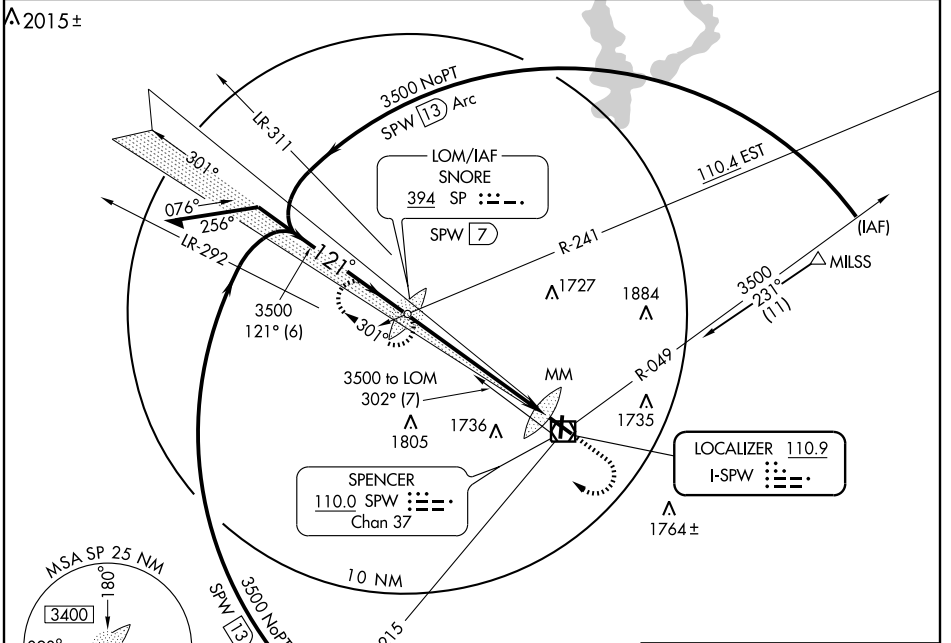
ILS RWY 12

SPENCER MUNI (SPW)

LOC I-SPW 110.9	APP CRS 121°	Rwy Idg 6000
		TDZE 1339
		Apt Elev 1339

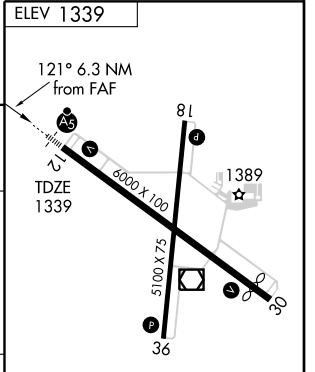
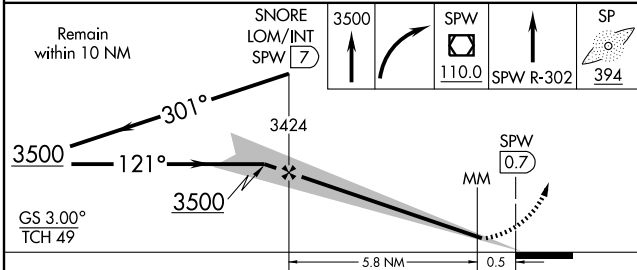
NA	MALSR 	MISSED APPROACH: Climb to 3500 then right turn direct SPW VOR/DME, then via SPW R-302 to SNORE LOM/INT/SPW 7 DME and hold.
-----------	-----------	--

ASOS 126.625	MINNEAPOLIS CENTER 127.75 257.7	UNICOM 123.0 (CTAF) 0
------------------------	---	--



NC-3, 22 OCT 2009 to 19 NOV 2009

NC-3, 22 OCT 2009 to 19 NOV 2009



CATEGORY	A	B	C	D
S-ILS 12		1539-½	200 (200-½)	
S-LOC 12	1820-½ 481 (500-½)		1820-¾ 481 (500-¾)	1820-1 481 (500-1)
CIRCLING	1820-1 481 (500-1)		1820-1½ 481 (500-1½)	2040-2¼ 701 (800-2¼)

REIL Rwy 18, 30 and 36 **0**
MIRL Rwy 12-30 and 18-36 **0**

FAF to MAP 6.3 NM

Knots	60	90	120	150	180
Min:Sec	6:18	4:12	3:09	2:31	2:06

SPENCER, IOWA
Amdt 1A 09071

43°10'N-95°12'W

SPENCER MUNI (SPW) ILS RWY 12