

SPENCER, IOWA

AL-5309 (FAA)

GPS RWY 18

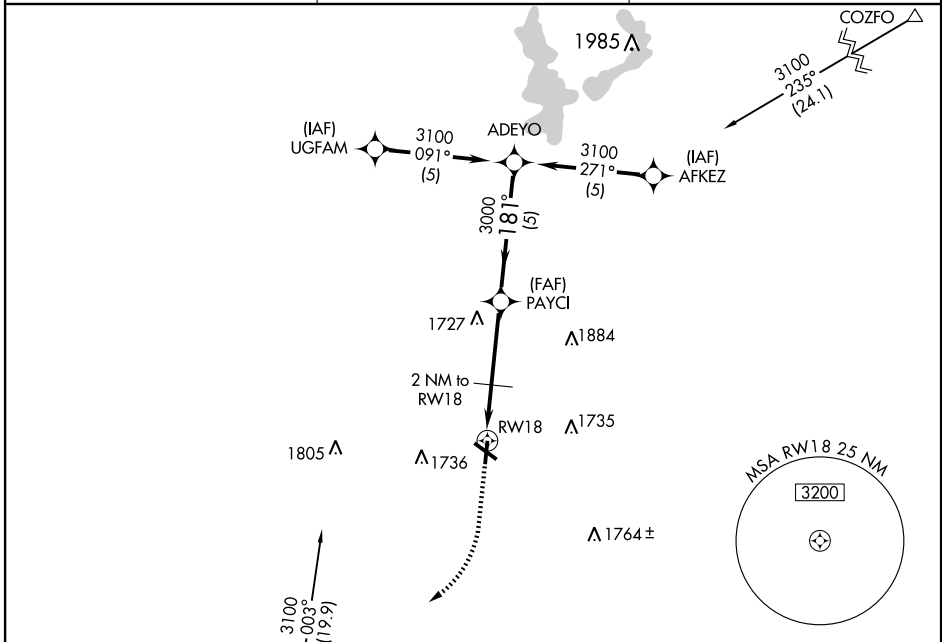
SPENCER MUNI (SPW)

APP CRS	Rwy Idg	5100
181°	TDZE	1337
	Apt Elev	1339

▲ NA

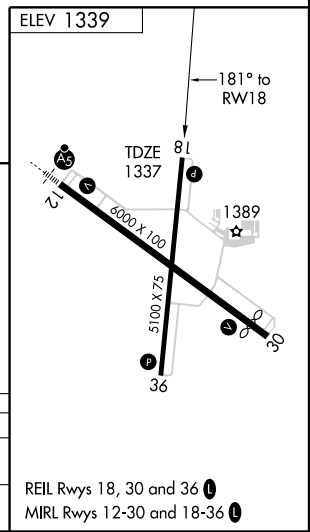
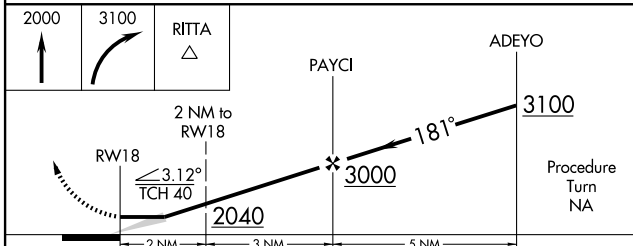
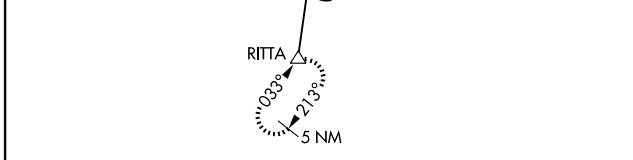
MISSED APPROACH: Climb to 2000, then climbing right turn to 3100 direct RITTA WP and hold.

ASOS 126.625	MINNEAPOLIS CENTER 127.75 257.7	UNICOM 123.0 (CTAF) 0
------------------------	---	---------------------------------



NC-3, 22 OCT 2009 to 19 NOV 2009

NC-3, 22 OCT 2009 to 19 NOV 2009



CATEGORY	A	B	C	D
S-18	1800-1	463 (500-1)	1800-1½ 463 (500-1½)	1800-1½ 463 (500-1½)
CIRCLING	1800-1	461 (500-1)	1800-1½ 461 (500-1½)	2040-2¼ 701 (800-2¼)

REIL Rwy 18, 30 and 36 **0**
MIRL Rwy 12-30 and 18-36 **0**

SPENCER, IOWA
Orig 09071

43°10'N-95°12'W

SPENCER MUNI (SPW)

GPS RWY 18