

ROBINSON, ILLINOIS

AL-5308 (FAA)

VOR/DME RSV 108.4 Chan 21	APP CRS 273°	Rwy Idg TDZE Apt Elev	5109 455 462
--	------------------------	-----------------------------	---

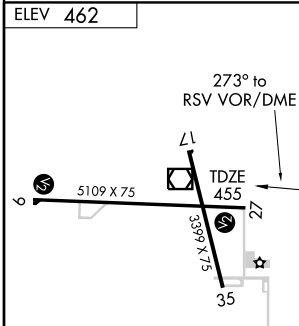
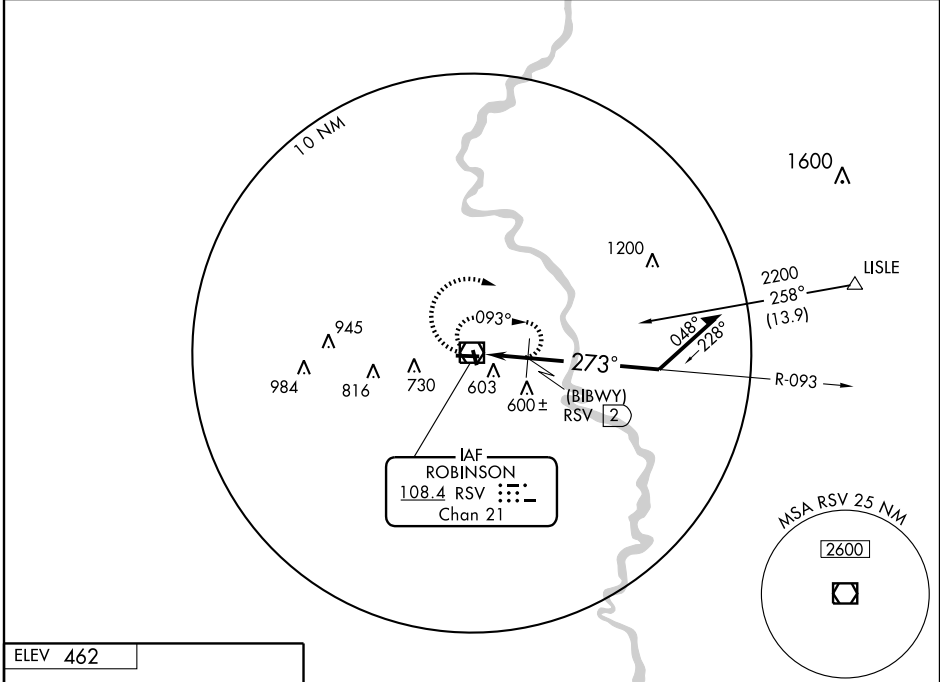
VOR or GPS RWY 27

ROBINSON MUNI (RSV)

NA Obtain local altimeter setting on CTAF; when not available use Terre Haute altimeter setting and increase all MDAs 120 feet.

MISSED APPROACH: Climbing right turn to 2200 in RSV VOR/DME holding pattern.

AWOS-3 120.50	HULMAN APP CON ★ 119.25 339.8	UNICOM 123.0 (CTAF) 0
-------------------------	---	--



2200	RSV	108.4
------	-----	-------

VOR/DME

Remain within 10 NM

093°

(BIBWY) RSV 2

273°

960*

2 NM

* 1080 when using Terre Haute altimeter setting.

CATEGORY	A	B	C	D
S-27	960-1	505 (500-1)	960-1½	505 (500-½)
CIRCLING	960-1	498 (500-1)	1040-1½ 578 (600-1½)	1040-2 578 (600-2)
DME MINIMUMS				
S-27	860-1	405 (400-1)	860-1¼	405 (400-¼)
CIRCLING	940-1	478 (500-1)	1040-1½ 578 (600-1½)	1040-2 578 (600-2)

REIL Rwy 17, 9 and 27
MIRL Rwy 9-27 and 17-35 **0**

Knots	60	90	120	150	180
Min:Sec					

ROBINSON, ILLINOIS

Amdt 4 08269

39°01'N - 87°39'W

VOR or GPS RWY 27

ROBINSON MUNI (RSV)

EC-3, 22 OCT 2009 to 19 NOV 2009

EC-3, 22 OCT 2009 to 19 NOV 2009