

RNAV (GPS) RWY 27

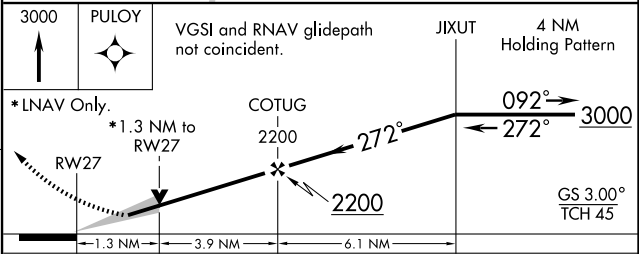
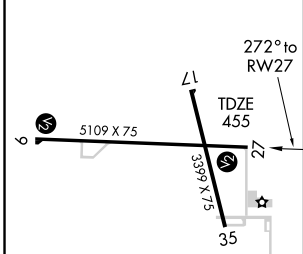
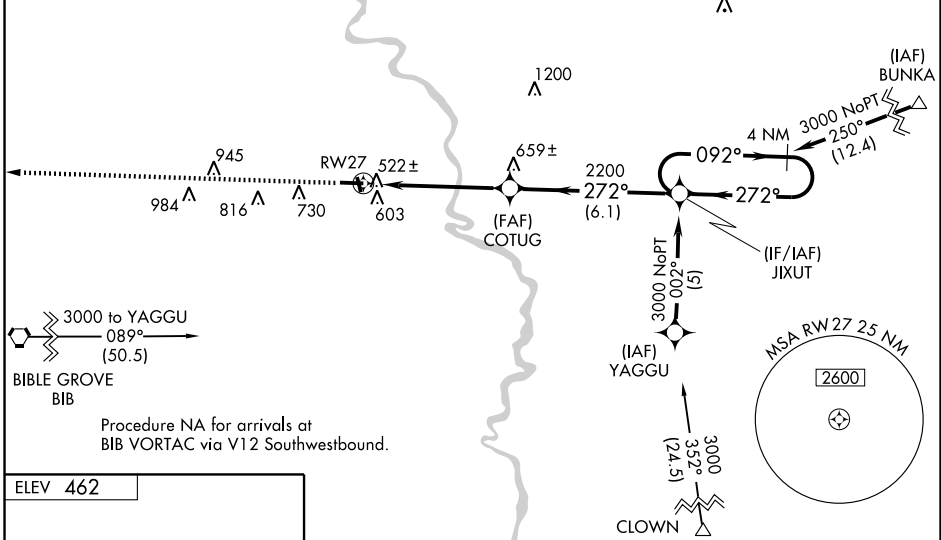
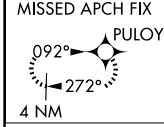
ROBINSON MUNI (RSV)

WAAS CH 69509 W27A	APP CRS 272°	Rwy Idg 5109 TDZE 455 Apt Elev 462
--	------------------------	---

When local altimeter setting not available, use Terre Haute Intl-Hulman Field altimeter and increase all DA 88 feet, all MDA 100 feet and all LPV, LNAV/VNAV visibility ¼ mile, LNAV Cat. C, D and Circling Cat. C, D visibility ¼ mile.
 For uncompensated Baro-VNAV systems, LNAV/VNAV NA below -15°C (5°F) or above 48°C (118°F). DME/DME RNP-0.3 NA. Baro-VNAV and VDP NA when using Terre Haute Intl-Hulman Field altimeter setting.

MISSED APPROACH: Climb to 3000 direct PULOV and hold.

AWOS-3 120.50	HULMAN APP CON ★ 119.25 339.8	UNICOM 123.0 (CTAF) 0
-------------------------	---	---------------------------------



CATEGORY	A	B	C	D
LPV DA	750-1 295 (300-1)			
LNAV/VNAV DA	892-1½ 437 (500-1½)			
LNAV MDA	900-1 445 (500-1)	900-1¼ 445 (500-1¼)	900-1½ 445 (500-1½)	900-1½ 445 (500-1½)
CIRCLING	960-1 498 (500-1)	1080-1¾ 618 (700-1¾)	1080-2 618 (700-2)	1080-2 618 (700-2)

ELEV 462

REIL Rwy 17, 9 and 27
 MIRL Rwy 9-27 and 17-35

EC-3, 22 OCT 2009 to 19 NOV 2009

EC-3, 22 OCT 2009 to 19 NOV 2009