

AMES, IOWA

AL-5307 (FAA)

VOR/DME TNU <b>112.5</b> Chan <b>72</b>	APP CRS <b>296°</b>	Rwy Idg TDZE <b>930</b> Apt Elev <b>955</b>
---	------------------------	---

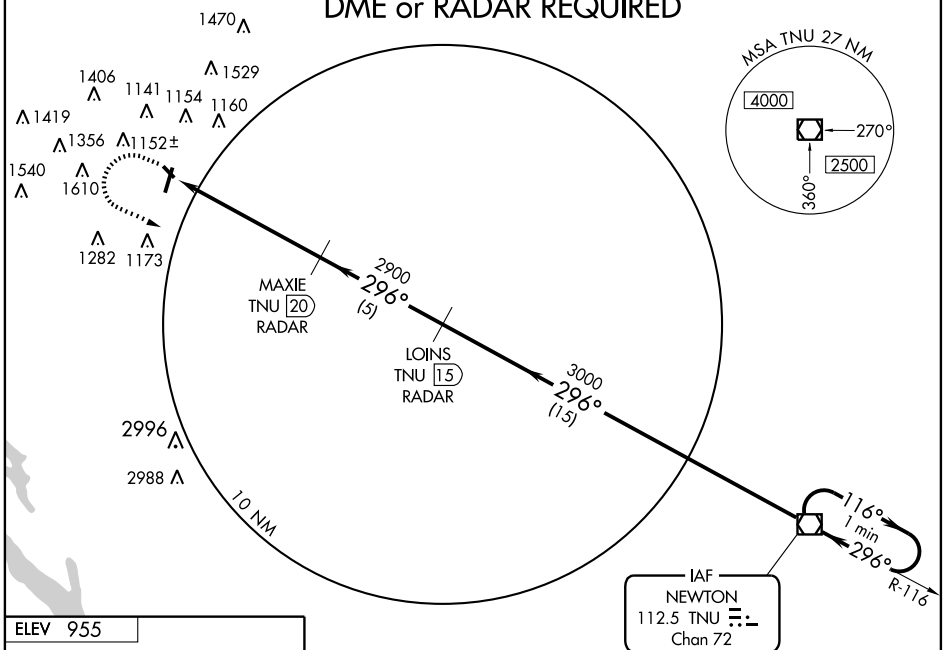
# VOR RWY 31

AMES MUNI (AMW)

**MISSED APPROACH:** Climb to 2000, then climbing left turn to 3000 direct TNU VOR/DME and hold.

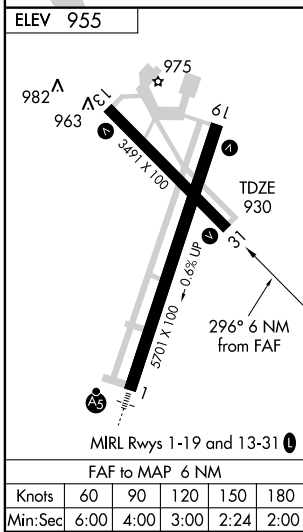
ASOS <b>132.025</b>	DES MOINES APP CON <b>123.9 307.15</b>	CLNC DEL <b>126.0</b>	UNICOM <b>122.7</b> (CTAF)
------------------------	---	--------------------------	-------------------------------

## DME or RADAR REQUIRED

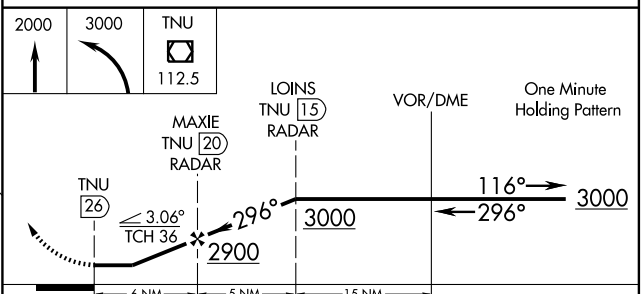


NC-3, 22 OCT 2009 to 19 NOV 2009

NC-3, 22 OCT 2009 to 19 NOV 2009



NoPT for arrivals on TNU VOR/DME  
airway radials 031 clockwise 081.



CATEGORY	A	B	C	D
S-31	1500-1 570 (600-1)	1500-1¼ 570 (600-1¼)	1500-1½ 570 (600-1½)	NA
CIRCLING	1500-1 545 (600-1)	1500-1¼ 545 (600-1¼)	1500-1½ 545 (600-1½)	NA

AMES, IOWA  
Amdt 10 09239

42°00'N - 93°37'W

# AMES MUNI (AMW) VOR RWY 31