

RNAV (GPS) RWY 22

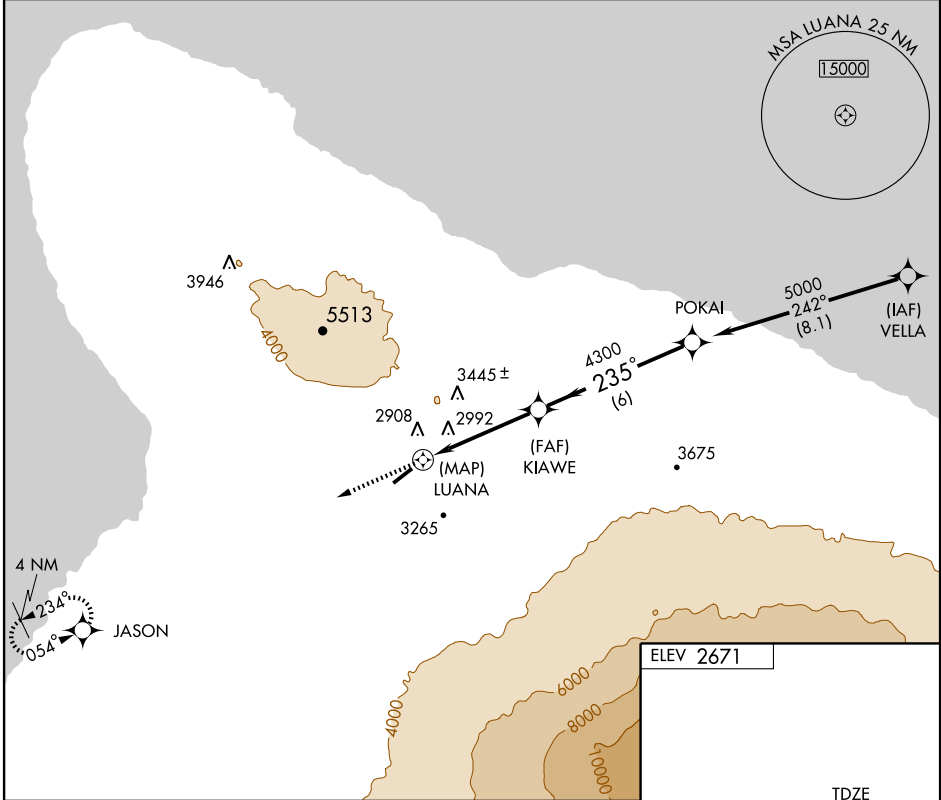
KAMUELA/ WAIMEA-KOHALA(MUE)(PHMU)

APP CRS 235°	Rwy Idg 5197
	TDZE 2671
	Apt Elev 2671

▽ GPS or RNP-0.3 Required. DME/DME RNP-0.3 NA.
△ NA Circling not authorized NW of Rwy 04-22.
 Straight-in minimums NA at night.

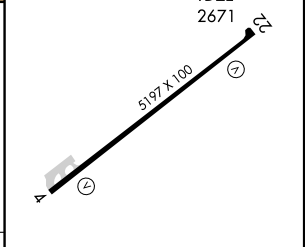
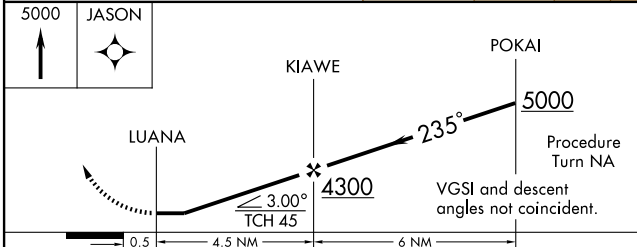
MISSED APPROACH: Climb to 5000
 direct JASON WP and hold.

AWOS-3 120.0	HCF APPROACH 126.0 278.3	CTAF 122.9 0
------------------------	------------------------------------	-------------------------------



PAC, 22 OCT 2009 to 17 DEC 2009

PAC, 22 OCT 2009 to 17 DEC 2009



CATEGORY	A	B	C	D
LNVA MDA	3660-1¼ 989 (1000-1¼)	3660-1½ 989 (1000-1½)	3660-3	989 (1000-3)
CIRCLING	3660-1¼ 989 (1000-1¼)	3660-1½ 989 (1000-1½)	3660-3 989 (1000-3)	3880-3 1209 (1300-3)

MIRL Rwy 4-22 **0**
 REIL Rwy 4 and 22