

DEVILS LAKE, NORTH DAKOTA

AL-5305 (FAA)

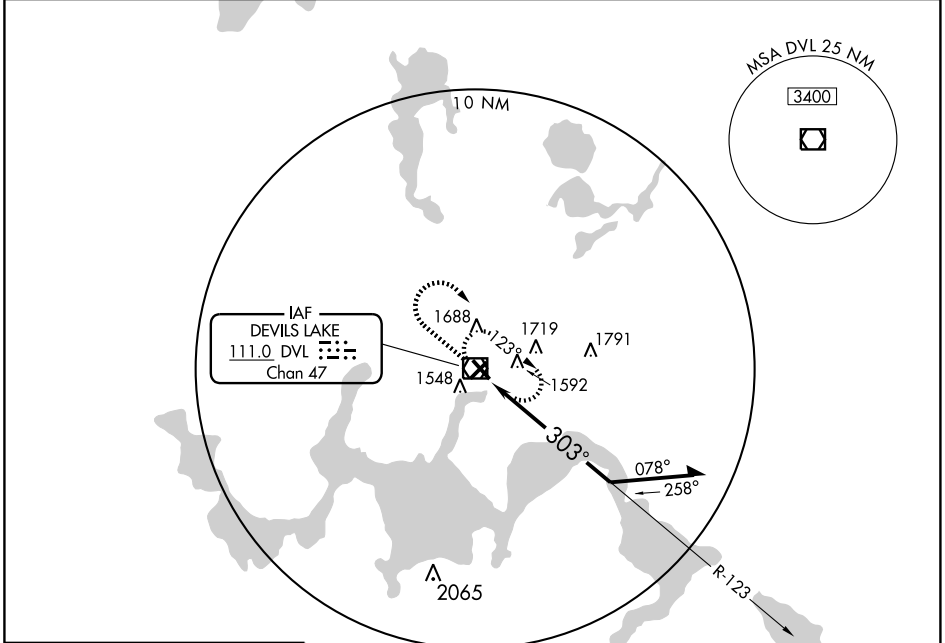
VOR/DME DVL 111.0 Chan 47	APP CRS 303°	Rwy Idg 4850	TDZE 1448	Apt Elev 1455
--	------------------------	-----------------	--------------	------------------

VOR RWY 31

DEVILS LAKE RGNL(DVL)

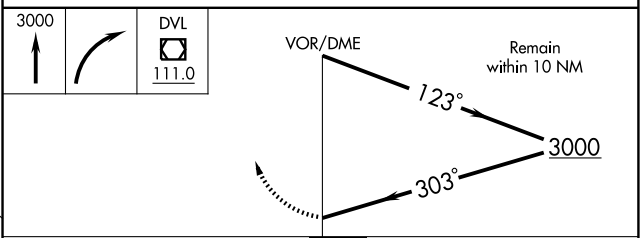
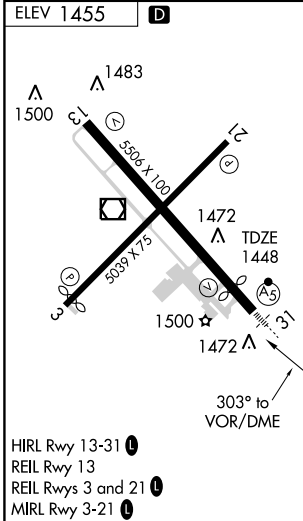
<p>▼ S-31 Cats A and B visibility increased ¼ mile for inoperative MALSR.</p>	<p>MALSR AS</p>	<p>MISSED APPROACH: Climb to 3000 then right turn direct DVL VOR/DME and hold.</p>
--	---------------------	--

<p>AWOS-3 125,875</p>	<p>GRAND FORKS RADIO 122.3</p>	<p>UNICOM 122.8 (CTAF)</p>
----------------------------------	---	---------------------------------------



NC-1, 22 OCT 2009 to 19 NOV 2009

NC-1, 22 OCT 2009 to 19 NOV 2009



CATEGORY	A	B	C	D
S-31	1920-¾ 472 (500-¾)		1920-1 472 (500-1)	
CIRCLING	2000-1 545 (600-1)		2000-1½ 545 (600-1½)	2080-2 625 (700-2)

DEVILS LAKE, NORTH DAKOTA
Orig-A 09295

48°07'N - 98°54'W

DEVILS LAKE RGNL(DVL)
VOR RWY 31