

# VOR RWY 21

DEVILS LAKE RGNL (DVL)

VOR/DME DVL <b>111.0</b> Chan <b>47</b>	APP CRS <b>225°</b>	Rwy Idg <b>5039</b> TDZE <b>1449</b> Apt Elev <b>1455</b>
---	------------------------	---

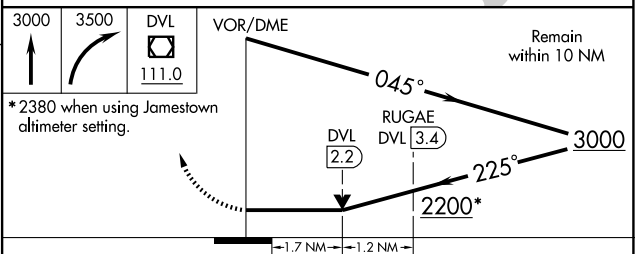
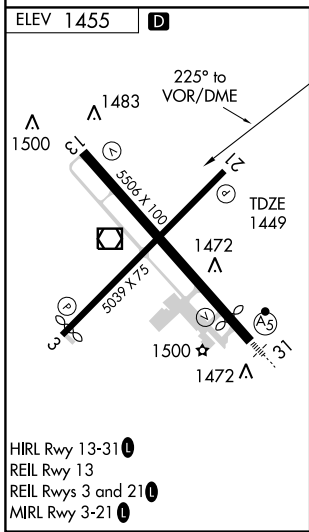
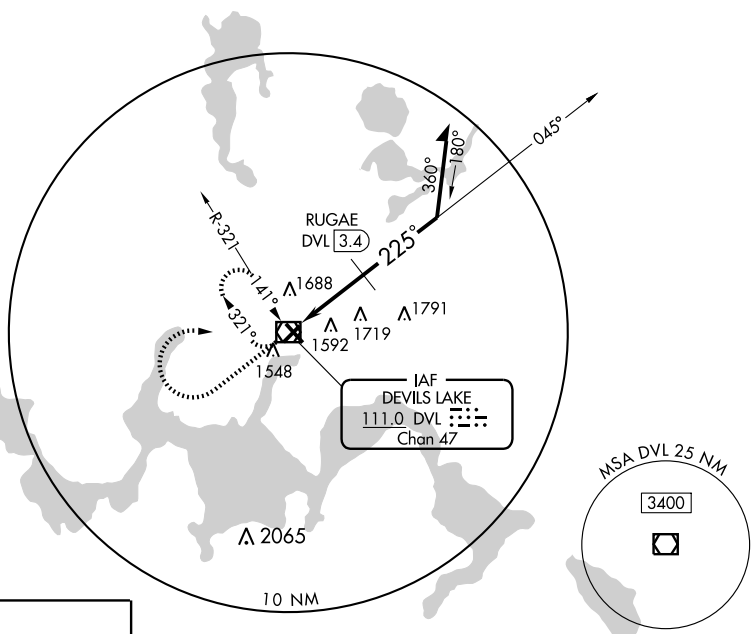
**⚠** When local altimeter setting not received, use Jamestown altimeter setting and increase all MDA 180 feet, increase S-21 and Circling visibility Cat. A ½ mile, Cat. C and D ½ mile, increase RUGAE FIX MINIMUMS S-21 and Circling visibility Cat. B to 1¼, Cat. C to 2¼ and Cat. D to 2½. VDP NA when using Jamestown altimeter setting.

**MISSED APPROACH:** Climb to 3000 then climbing right turn to 3500 direct DVL VOR/DME and hold.

AWOS-3 <b>125.875</b>	GRAND FORKS RADIO <b>122.3</b>	UNICOM <b>122.8 (CTAF) 0</b>
--------------------------	-----------------------------------	---------------------------------

NC-1, 22 OCT 2009 to 19 NOV 2009

NC-1, 22 OCT 2009 to 19 NOV 2009



CATEGORY	A		B		C		D	
	MDA	DA	MDA	DA	MDA	DA	MDA	DA
S-21	2200-1	751 (800-1)	2200-1¼	751 (800-1¼)	2200-2¼	751 (800-2¼)	2200-2½	751 (800-2½)
CIRCLING	2200-1	745 (800-1)	2200-1¼	745 (800-1¼)	2200-2¼	745 (800-2¼)	2200-2½	745 (800-2½)
<b>RUGAE FIX MINIMUMS</b>								
S-21	2020-1	571 (600-1)	2020-1½	571 (600-1½)	2020-1¾	571 (600-1¾)	2080-2	625 (700-2)
CIRCLING	2020-1	565 (600-1)	2020-1½	565 (600-1½)	2080-2	625 (700-2)		