

DEVILS LAKE, NORTH DAKOTA

AL-5305 (FAA)

VOR RWY 13

DEVILS LAKE RGNL(DVL)

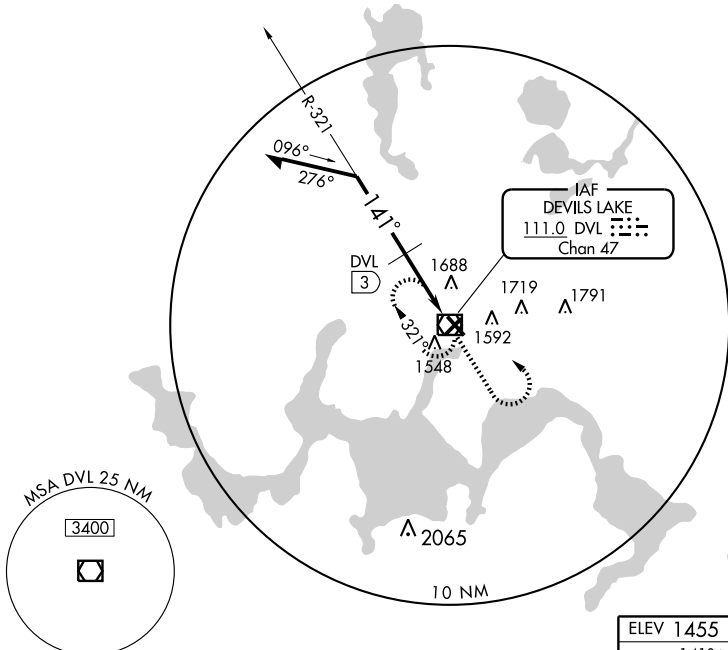
| | | | |
|--|------------------------|-----------------------------|---|
| VOR/DME DVL 111.0 Chan 47 | APP CRS 141° | Rwy Idg TDZE Apt Elev | 5506 1455 1455 |
|--|------------------------|-----------------------------|---|

MISSED APPROACH: Climb to 3000 then left turn direct VOR/DME and hold.

AWOS-3
125,875

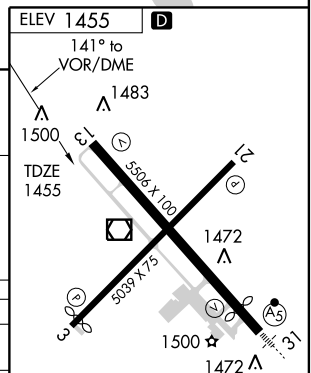
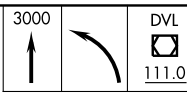
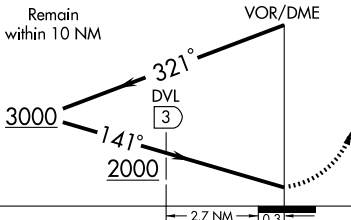
GRAND FORKS RADIO
122.3

UNICOM
122.8 (CTAF)



NC-1, 22 OCT 2009 to 19 NOV 2009

NC-1, 22 OCT 2009 to 19 NOV 2009



| CATEGORY | A | B | C | D |
|--------------|--------|-------------|-------------------------|-------------------------|
| S-13 | 2000-1 | 545 (600-1) | 2000-1½ 545 (600-1½) | 2000-1¾ 545 (600-1¾) |
| CIRCLING | 2000-1 | 545 (600-1) | 2000-1½ 545 (600-1½) | 2080-2 625 (700-2) |
| DME MINIMUMS | | | | |
| S-13 | 1940-1 | 485 (500-1) | 1940-1¼ 485 (500-1¼) | 1940-1½ 485 (500-1½) |
| CIRCLING | 2000-1 | 545 (600-1) | 2000-1½ 545 (600-1½) | 2080-2 625 (700-2) |

HIRL Rwy 13-31
REIL Rwy 13
REIL Rws 3 and 21
MIRL Rwy 3-21

DEVILS LAKE, NORTH DAKOTA
Orig-A 09295

48°07'N - 98°54'W

DEVILS LAKE RGNL(DVL)

VOR RWY 13