


RNAV (GPS) RWY 31

DEVILS LAKE RGNL (DVL)

| | | |
|--|------------------------|---|
| WAAS CH 58314 W31A | APP CRS 311° | Rwy ldg 4850 TDZE 1449 Apt Elev 1456 |
|--|------------------------|---|

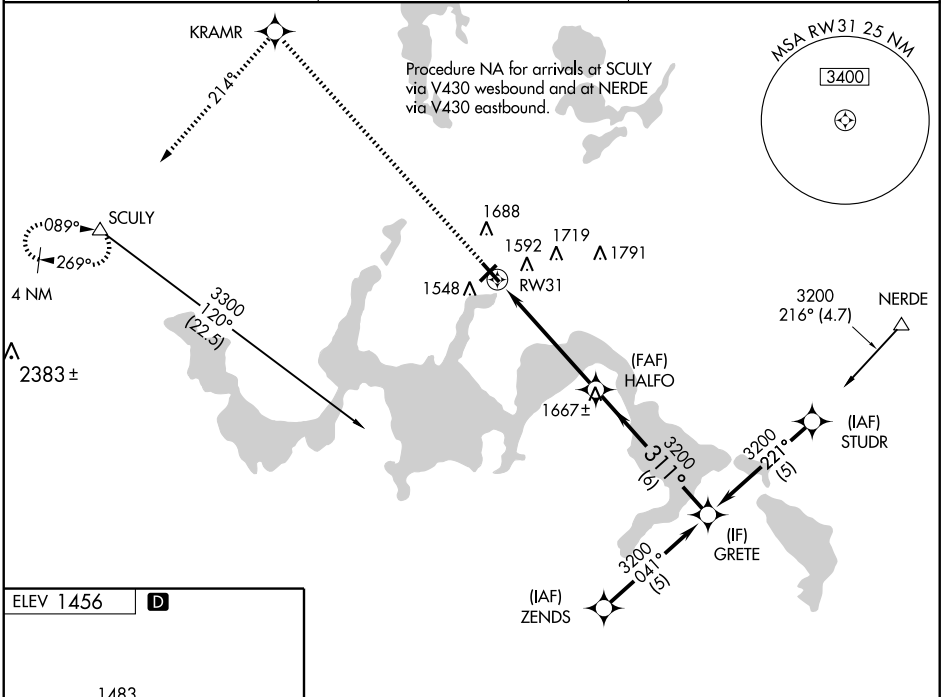
▼ For uncompensated Baro-VNAV systems, LNAV/VNAV NA below -17°C (2°F) or above 46°C (114°F). DME/DME RNP-0.3 NA. For inoperative MALS, increase visibility LNAV Cat D 1 ¼ mile. When local altimeter setting not received, use Jamestown altimeter setting and increase all DA 172 feet, all MDA 180 feet, increase LPV all Cats visibility ½ mile, LNAV/VNAV all Cats ¾ mile, LNAV Cat C ½ mile, Cat D ¼ mile, circling Cats C and D ½ mile. Baro-VNAV and VDP NA when using Jamestown altimeter setting. For inoperative MALS, when using Jamestown altimeter setting, increase LPV all Cats visibility to 1 ½ mile.

MALS



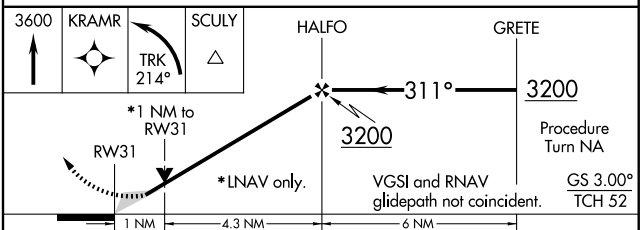
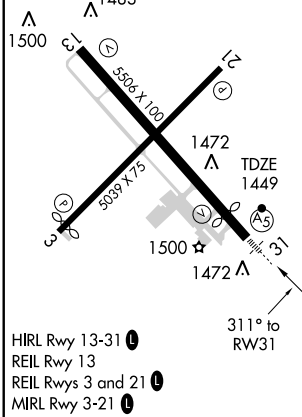
MISSED APPROACH:
Climb to 3600 direct KRAMR and left turn via Track 214° to SCULY and hold.

| | | |
|--------------------------|-----------------------------------|---------------------------------|
| AWOS-3 125.875 | GRAND FORKS RADIO 122.3 | UNICOM 122.8 (CTAF) 0 |
|--------------------------|-----------------------------------|---------------------------------|



NC-1, 22 OCT 2009 to 19 NOV 2009

NC-1, 22 OCT 2009 to 19 NOV 2009



| CATEGORY | A | B | C | D |
|--------------|--------|-------------|-------------------------|-----------------------|
| LPV DA | | 1699-½ | 250 (300-½) | |
| LNAV/VNAV DA | | 1907-1 | 458 (500-1) | |
| LNAV MDA | | 1800-½ | 351 (400-½) | 1800-1 351 (400-1) |
| CIRCLING | 2000-1 | 544 (600-1) | 2000-1½ 544 (600-1½) | 2080-2 624 (700-2) |