

RNAV (GPS) RWY 13

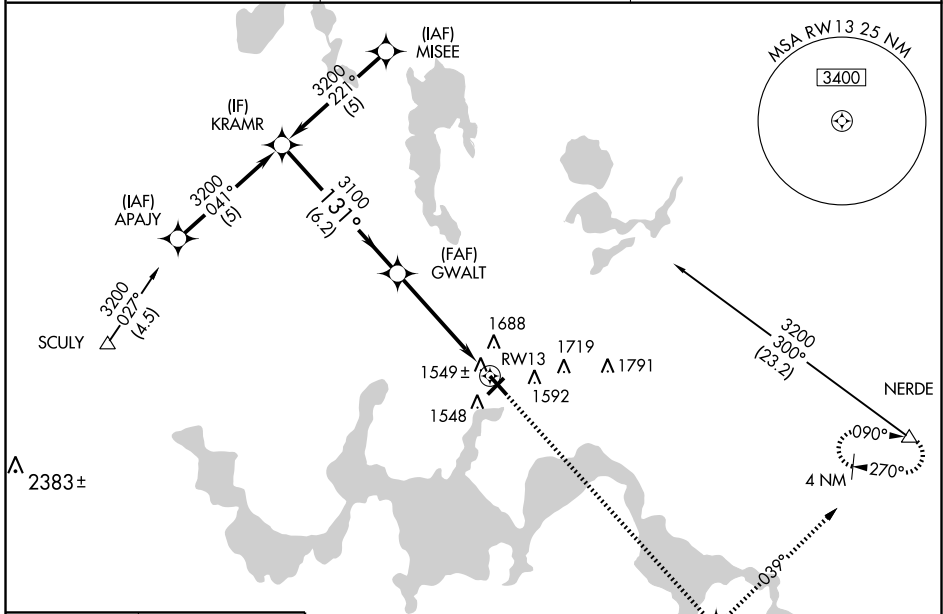
DEVILS LAKE RGNL (DVL)

WAAS CH 78314 W13A	APP CRS 131°	Rwy Idg 5507 TDZE 1456 Apt Elev 1456
--	------------------------	---

⚠ Baro-VNAV NA when using Jamestown altimeter setting. For uncompensated Baro-VNAV systems, LNAV/VNAV NA below -17°C (2°F) or above 46°C (114°F). DME/DME RNP-0.3 NA. Visibility reduction by helicopters NA. When local altimeter setting not received, use Jamestown altimeter setting and increase all DA 172 feet, and all MDA 180 feet, increase LPV all Cats visibility ¾ mile, LNAV/VNAV all Cats ½ mile, LNAV Cat C ¼ mile, Cat D ½ mile, circling Cats C and D ½ mile. VDP NA when using Jamestown altimeter setting.

MISSED APPROACH:
Climb to 3300 direct GRETE and left turn via track 039° to NERDE and hold.

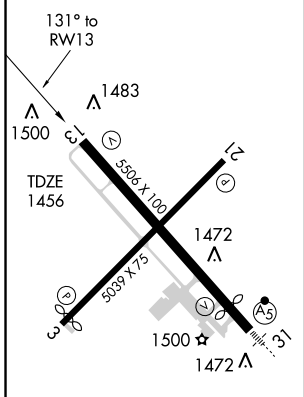
AWOS-3 125.875	GRAND FORKS RADIO 122.3	UNICOM 122.8 (CTAF) 0
--------------------------	-----------------------------------	---------------------------------



NC-1, 22 OCT 2009 to 19 NOV 2009

NC-1, 22 OCT 2009 to 19 NOV 2009

ELEV 1456	D
-----------	----------



- HIRL Rwy 13-31 **0**
- REIL Rwy 13
- REIL Rwy 3 and 21 **0**
- MIRL Rwy 3-21 **0**

Procedure NA for arrivals at SCULY via V430 westbound and arrivals at NERDE via V430 eastbound.

KRAMR Procedure Turn NA GS 3.00° TCH 52	* LNAV only.		3300 GRETE	NERDE
	3200	3100	1.1 NM to RWY 13	TRK 039°
CATEGORY	A	B	C	D
LPV DA		1768-1	312 (400-1)	
LNAV/VNAV DA		1956-1¾	500 (500-1¾)	
LNAV MDA	1860-1	404 (500-1)	1860-1¼	404 (500-1¼)
CIRCLING	2000-1	544 (600-1)	2000-1½	2080-2
			544 (600-1½)	624 (700-2)